

Planning and Climate Change New Challenges



Sean Rendall



Thameswey
Ltd

‘Planning plays a key role in helping shape places to secure radical reductions in greenhouse gas emissions, minimising vulnerability and providing resilience to the impacts of climate change, and supporting the delivery of renewable and low carbon energy and associated infrastructure. *This is central to the economic, social and environmental dimensions of sustainable development.*’

(Para 93 NPPF)

Thameswey
Ltd

‘Local planning authorities should adopt proactive strategies to mitigate and adapt to climate change’ (93)

They should have a positive strategy to promote energy from renewable and low carbon sources and design their policies to maximise renewable and low carbon energy (97)

Planning - the recent past, the new norm?

- Policy reform – NPPF
- Process reform – GIB, Planning Performance Guarantee, ‘red tape challenge’
- Localism – new roles and expectations
- Taylor Review
- Same game - new rules?

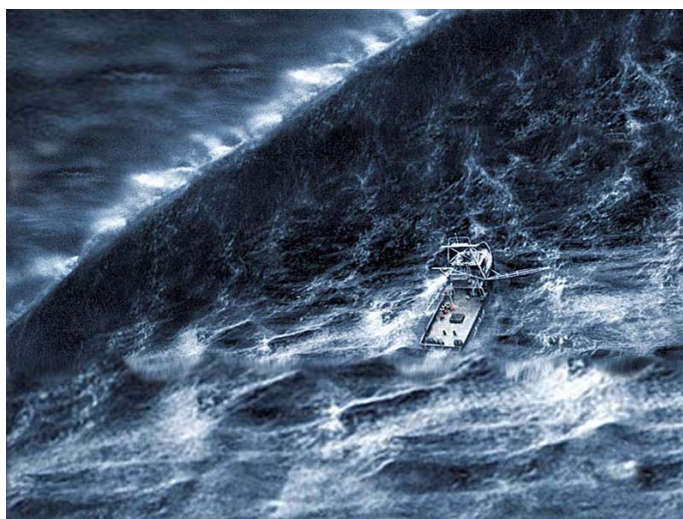
And decisions awaited on.....

- Allowable Solutions for Zero Carbon
- Changes to Part L of the Building Reg.s
- Housing Standards Review

Plus...

- DECC implementation of Heat Strategy
- Green Deal
- Energy Bill, EMR, Feed in Tariff MkII

Thameswey
Ltd



Planning and Climate Change - a perfect storm?

Thameswey
Ltd

Growth and Infrastructure Bill

Limits on Power to require Information with Planning Applications

- Requirements for applicants to provide further information "must be reasonable having regard, in particular, to the nature and scale of the proposed development". Information can only be required "if it is reasonable to think that the information will be a material consideration in the determination of the application."

Thameswey
Ltd

Taylor Review's priorities for new and updated guidance

'Updating **Climate Change and Renewable Energy, to bring this vital material** up to date and ensure it is used effectively and proportionately.'

Thameswey
Ltd

Taking forward Taylor recommendations

- Radical streamlining to reduce volume of guidance and ensure its kept up to date
- Web based across range of issues
- Guidance directly related to NPPF
- Practical aspects of implementing NPPF
- 'Leaving space for local gov. to think for itself'
- Industry and cross-sector guidance encouraged

Thameswey
Ltd

Business as Usual is not an option

'With growth rates of GG emissions of 5% in 2010, even the IPCC's highest emissions scenarios are now being overshoot. As a result, the 21st century's emissions budget is being consumed at a rapid rate.'

"While the trajectory of the climate science is clear, the trajectory of policy solutions from government is not." (Hugh Ellis, TCPA)

Thameswey
Ltd

A challenge to Yorkshire and Humber:

How can your collective learning, experience and resources be applied to place the communities you serve on a pathway to a low-carbon sustainable future?

Thameswey
Ltd

sean.rendall@ecsc.uk.com



Thameswey
Ltd