

Yorkshire and Humber Climate Change Skills for Planners Programme

Introduction

Helen Heward & Ruth Hardingham

Yorkshire & Humber Climate Change Skills Fund

Climate Change Skills Fund and Wakefield Council

Ian Thompson, Wakefield Council

The North West CLASP Programme

Krista Patrick, CLASP



North West Climate Change Skills Fund

6th March 2012

Krista Patrick

Programme Manager



CLASP.

CLASP

The NW Climate Change Local Area Support Programme

- Since 2008 has provided free support for all North West Local Authorities, on climate change mitigation and adaptation & on renewable energy planning issues.
- CLASP has steadily grown its services from its NWIEP funded base attracting support from NWDA, and in 2010/11 hosting the NW Climate Change Skills Fund
- The programme is sector-led, hosted by Liverpool City Council, and has been highly valued by North West Local Authorities



CLASP.

The CLASP Team

The CLASP Team comprises the following:

- Advisory Group
- Host Authority
- Consultants



Climate Change Skills Fund

A programme that **builds skills and capacity** across a range of local authority responsibilities to:

- Facilitate the delivery of **increased renewable energy supply** through the activities of local authority planning departments
- Help **local authorities** more broadly to **understand and undertake their role in tackling climate change**, *including* training for **members**, and working with **local communities**
- Allowing **planning departments** to **promote better community engagement in the planning process**, *including* on renewables



CLASP.

Workstreams

- Planning and Technical Support and Training
- Green Finance
- Shared Learning Group
- Supporting Communities
- Low Carbon Procurement
- Leadership and Member Development
- Sub-Regional Innovation



CLASP.

Planning Technical Support

- Technical Training Workshops
- Low Carbon Briefings and Site Visits
- Coaching Service
- Supporting Resources



Green Finance

- Supporting Pilot Local Authorities
- Green Finance Training Seminars
- Supporting Resources
 - Green Finance Guide
 - Pilot Study Summaries



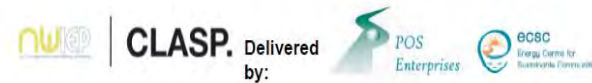
Shared Learning Group

- Tailored training and development for 16 LPAs
- Explored key issues in planning for climate change
- Three briefing notes prepared on
 - Zero carbon transport
 - Raising the profile
 - Collaboration and cooperation



Planning Policies for
Sustainable Building -
Guidance for LDFs

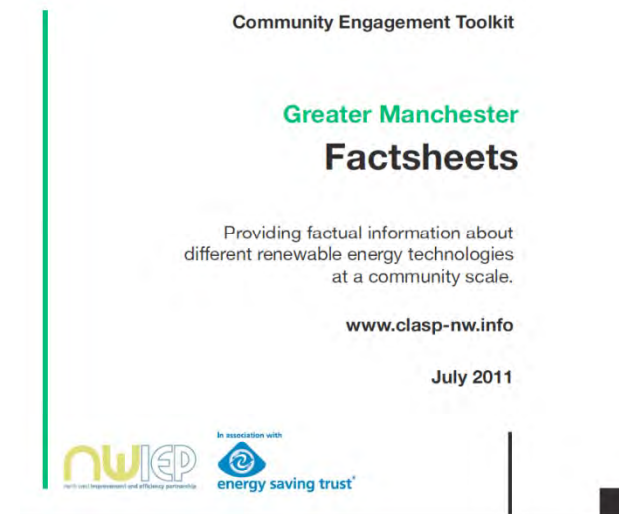
John Silvester



CLASP.

Supporting Communities

- Community Engagement Toolkit
 - Factsheets
 - Case Studies
 - Checklist
 - Powerpoint Presentation
 - Literature Library
- Community Engagement Training
 - Accredited community engagement training course
 - Planning training on engaging with communities





Low Carbon Procurement

- Strictly Sustainability Event
- Simple Steps to Environmentally Sustainable Procurement
- Awareness Raising Sessions
- Low Carbon Procurement Guidance Note for Suppliers

Strictly Sustainability

The Science of buying with a conscience

<h3 style="margin: 0;">Agenda and Programme</h3> <p>On with the show...</p> <table border="0" style="width: 100%;"> <tr> <td style="width: 15%;">9.30am</td> <td>Registration and refreshments</td> <td></td> </tr> <tr> <td>10.00am</td> <td>Welcome and Introduction</td> <td style="text-align: right;">Paul Murphy Melanie Coe</td> </tr> <tr> <td>10.10am</td> <td>Defra's Sustainable Procurement Policy</td> <td style="text-align: right;">Stuart Davies</td> </tr> <tr> <td>10.20am</td> <td>BS8903</td> <td></td> </tr> </table> <p style="text-align: center;">☆☆☆☆☆</p> <p>Keep on moving</p> <table border="0" style="width: 100%;"> <tr> <td style="width: 15%;">10.35am</td> <td>Case Study - Manchester Airport</td> <td style="text-align: right;">Neil Craddock</td> </tr> <tr> <td>10.50am</td> <td>Sustainability in tender evaluations</td> <td style="text-align: right;">Jo O'Neill</td> </tr> <tr> <td>11.05am</td> <td>The use of sustainable biofuels</td> <td style="text-align: right;">Steven Little</td> </tr> <tr> <td>11.20am</td> <td>Q&A and mini workshop 1</td> <td></td> </tr> <tr> <td>11.30am</td> <td>Tea/Coffee break</td> <td></td> </tr> </table> <p style="text-align: center;">☆☆☆☆☆</p> <p>Trip the light fantastic</p> <table border="0" style="width: 100%;"> <tr> <td style="width: 15%;">11.50am</td> <td>Introducing Solid State Lighting (SSL)</td> <td style="text-align: right;">Xavier Fullright</td> </tr> <tr> <td>12.10pm</td> <td>A supplier's perspective</td> <td style="text-align: right;">Basil Phillips</td> </tr> <tr> <td>12.25pm</td> <td>Q & A and mini workshop 2</td> <td></td> </tr> <tr> <td>12.45pm</td> <td>Break for lunch/supplier engagement</td> <td></td> </tr> </table> <p style="text-align: center;">☆☆☆☆☆</p> <p>Quick steps to sustainability</p> <table border="0" style="width: 100%;"> <tr> <td style="width: 15%;">1.45pm</td> <td>Suspicious timber and the supply chain</td> <td style="text-align: right;">Beatrix Richards</td> </tr> <tr> <td>2.00pm</td> <td>Using recycled material - supplier's view</td> <td style="text-align: right;">Urban Space Products</td> </tr> <tr> <td>2.15pm</td> <td>Using recycled material - a supplier's view</td> <td style="text-align: right;">Sudscape</td> </tr> <tr> <td>2.30pm</td> <td>Q & A</td> <td></td> </tr> </table> <p style="text-align: center;">☆☆☆☆☆</p> <p>It takes two to tango</p> <table border="0" style="width: 100%;"> <tr> <td style="width: 15%;">2.35pm</td> <td>How to innovate through procurement</td> <td style="text-align: right;">Dr Elvira Uyarra</td> </tr> <tr> <td>2.50pm</td> <td>Cheshire & Warrington eco-reps handbook</td> <td style="text-align: right;">Peter Bulmer</td> </tr> <tr> <td>3.05pm</td> <td>Collaborative Engagement</td> <td style="text-align: right;">Louise Maris-Evans</td> </tr> <tr> <td>3.25pm</td> <td>Q&A and mini workshop 3</td> <td></td> </tr> <tr> <td>3.45pm</td> <td>Encore - we present feedback from workshops 1 and 2</td> <td></td> </tr> </table> <p style="text-align: center;">☆☆☆☆☆</p> <p>Judges' Panel</p> <table border="0" style="width: 100%;"> <tr> <td style="width: 15%;">3.55pm</td> <td>How did we score?</td> <td style="text-align: right;">Vicki O'Kelly</td> </tr> <tr> <td>4.00pm</td> <td>Close</td> <td></td> </tr> </table>		9.30am	Registration and refreshments		10.00am	Welcome and Introduction	Paul Murphy Melanie Coe	10.10am	Defra's Sustainable Procurement Policy	Stuart Davies	10.20am	BS8903		10.35am	Case Study - Manchester Airport	Neil Craddock	10.50am	Sustainability in tender evaluations	Jo O'Neill	11.05am	The use of sustainable biofuels	Steven Little	11.20am	Q&A and mini workshop 1		11.30am	Tea/Coffee break		11.50am	Introducing Solid State Lighting (SSL)	Xavier Fullright	12.10pm	A supplier's perspective	Basil Phillips	12.25pm	Q & A and mini workshop 2		12.45pm	Break for lunch/supplier engagement		1.45pm	Suspicious timber and the supply chain	Beatrix Richards	2.00pm	Using recycled material - supplier's view	Urban Space Products	2.15pm	Using recycled material - a supplier's view	Sudscape	2.30pm	Q & A		2.35pm	How to innovate through procurement	Dr Elvira Uyarra	2.50pm	Cheshire & Warrington eco-reps handbook	Peter Bulmer	3.05pm	Collaborative Engagement	Louise Maris-Evans	3.25pm	Q&A and mini workshop 3		3.45pm	Encore - we present feedback from workshops 1 and 2		3.55pm	How did we score?	Vicki O'Kelly	4.00pm	Close		<h3 style="margin: 0;">Cast list</h3> <p>Paul Murphy a corporate procurement manager from Manchester City Council unveils a sustainability initiative.</p> <p>Melanie Coe is head of sustainable procurement at Defra. In the interests of sustainability she'll be delivering her presentation to you via filmed link.</p> <p>Stuart Davies is a sustainable procurement consultant who'll be outlining the new British Standard for Sustainable Procurement.</p> <p>Neil Craddock, procurement lead from Manchester Airport Group, headed a plan to buy low carbon vehicles and introduce whole-life costing into procurement.</p> <p>Jo O'Neill from the AGMA procurement hub will highlight some simple ways of building sustainability into tender evaluations.</p> <p>Steven Little is from MercedesTravel where they've been trialling biofuels in their vehicles with interesting results.</p> <p>Mini Workshop 1: what are the barriers to progressing sustainable procurement in your organisation?</p> <p>Xavier Fullright from Envirolink explains the technology behind SSL and why you should consider using it.</p> <p>Basil Phillips, CSA Photonics, reveals the benefits of SSL.</p> <p>Mini Workshop 2: does your organisation have good practice/ case studies/tools to share with others?</p> <p>Beatrix Richards, policy and trade manager with the World Wildlife Fund, looks at the timber supply chain and how to check you are buying sustainably.</p> <p>Urban Space Products have a range of eco stress furniture products. Paul Gerrat highlights the advantages of buying eco?</p> <p>Sudscape from Manchester have come up with an innovative porous paving that can combat flood risks. Wayne Langford will tell you how it works.</p> <p>Dr Uyarra, from the Manchester Institute of Innovation Research is the author of a report which looks at innovation through public sector procurement.</p> <p>Peter Bulmer will reveal the facts behind the creation of the eco-reps handbook - and how it was done.</p> <p>Louise Maris-Evans, a sustainable procurement consultant, and Mick Smith from Groundwork highlight Blackburn with Darwen Council's Sustainable Procurement Group and its successes.</p> <p>Mini Workshop 3: what one thing will you take away from today and what further support do you need?</p> <p>Vicki O'Kelly is leading an NWIEP and CLASP funded project to develop a best practice sustainability guide for councils.</p> <p style="text-align: center;">March 29, 2011 at the Museum of Science and Industry, Liverpool Road, Castlefield, Manchester M3 4FP</p> <p style="text-align: center;">Directions and map: www.mosi.org.uk/visiting-us/where-are-we.aspx</p>
9.30am	Registration and refreshments																																																																									
10.00am	Welcome and Introduction	Paul Murphy Melanie Coe																																																																								
10.10am	Defra's Sustainable Procurement Policy	Stuart Davies																																																																								
10.20am	BS8903																																																																									
10.35am	Case Study - Manchester Airport	Neil Craddock																																																																								
10.50am	Sustainability in tender evaluations	Jo O'Neill																																																																								
11.05am	The use of sustainable biofuels	Steven Little																																																																								
11.20am	Q&A and mini workshop 1																																																																									
11.30am	Tea/Coffee break																																																																									
11.50am	Introducing Solid State Lighting (SSL)	Xavier Fullright																																																																								
12.10pm	A supplier's perspective	Basil Phillips																																																																								
12.25pm	Q & A and mini workshop 2																																																																									
12.45pm	Break for lunch/supplier engagement																																																																									
1.45pm	Suspicious timber and the supply chain	Beatrix Richards																																																																								
2.00pm	Using recycled material - supplier's view	Urban Space Products																																																																								
2.15pm	Using recycled material - a supplier's view	Sudscape																																																																								
2.30pm	Q & A																																																																									
2.35pm	How to innovate through procurement	Dr Elvira Uyarra																																																																								
2.50pm	Cheshire & Warrington eco-reps handbook	Peter Bulmer																																																																								
3.05pm	Collaborative Engagement	Louise Maris-Evans																																																																								
3.25pm	Q&A and mini workshop 3																																																																									
3.45pm	Encore - we present feedback from workshops 1 and 2																																																																									
3.55pm	How did we score?	Vicki O'Kelly																																																																								
4.00pm	Close																																																																									



Leadership and Member Development

- Senior elected members attended a leadership event held by PAS
- Help deliver strategic priorities when planning for climate change and low carbon futures
- Mix of guest speakers, shared experiences from peer councilors



planning advisory service

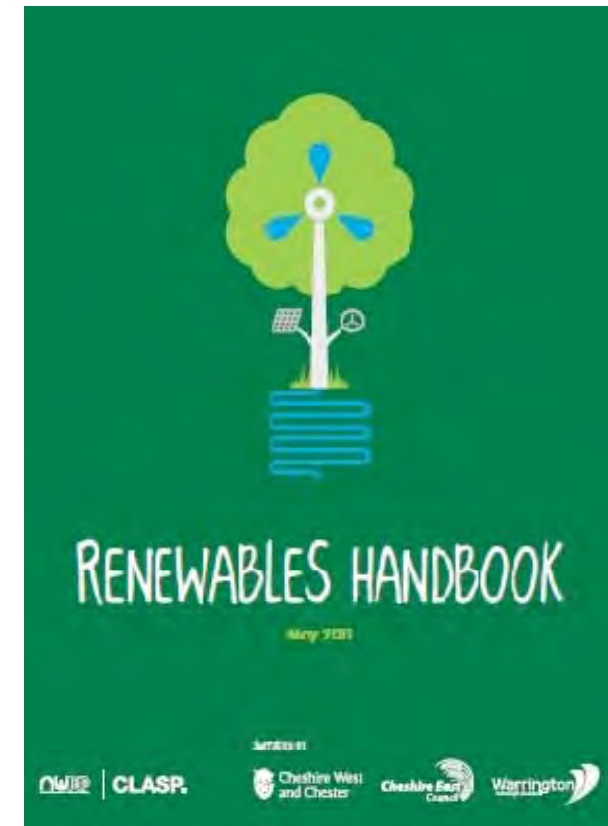
Sub-Regional Innovation Fund

- Low carbon and energy capacity building
- Support for community renewable energy
- Renewable energy capacity study and training
- Low carbon transport and tourism studies



Cheshire and Warrington

- Renewables Handbook and Roadshows
- Parish Council Workshops
- Support for Community Renewable Energy Groups
- Capacity Building Local Energy Supply and Distribution Networks
- Developing Renewable Energy Capacity on Non-Domestic Sites



CLASP.

Cumbria

- Training and Advice
- Sustainable Energy Eden
- Sustainable Transport Planning
- Sustainable Tourism Planning
- AONB Low Carbon Landscapes



Greater Manchester

- Action Learning team
- Low Carbon Performance Management Framework
- Key Publications
 - GM Energy Plan
 - Key Energy and Climate components of a GM Spatial Framework
 - Climate Change Strategy



Lancashire

- Rossendale Wind Energy in the Landscape Seminar
- Training and Communication – Renewable Energy Technologies
- Turning Lancashire Renewable Energy from Potential to Reality

CLASP. Climate Change
Local Area
Support
Programme

nwIEP
north west improvement and efficiency partnership



maslen
environmental
services
part of the JH Group

co₂sense™
carbon sense. Commercial sense.

SQW

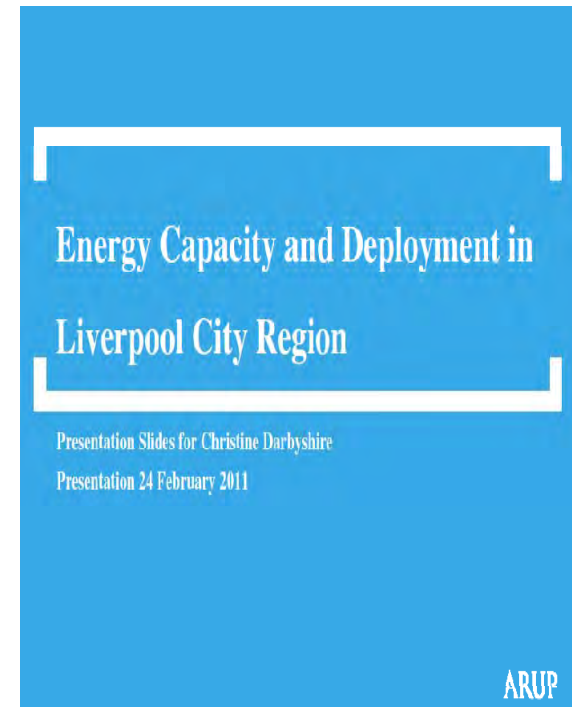

Liverpool
City Council

nwIEP
north west improvement and efficiency partnership

CLASP.

Merseyside

- Community Group Support
- Planning Officer Support
- Built to Last Skills
 - SPV Infrastructure Delivery Options
 - Options for future Low Carbon Service Delivery
 - Project Communications Plan
 - Sustainable Energy Action Plan



Key Considerations

- Potential for overlap with sub-regional and national support
- Limited time available to deliver the support
- Time and resources for officers to attend events
- Number of resources available and how to disseminate
- Need for clear communication and regular updates
- Meeting sub-regional and local priorities
- Emerging issues and the need to be flexible/responsive

Deliverables

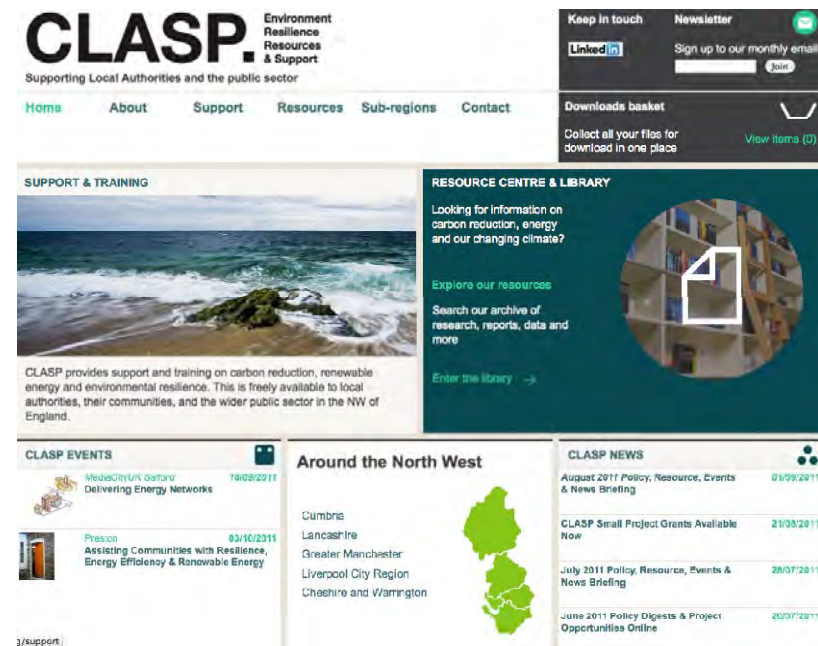
- Over 100 events, training sessions and workshops
- Support services accessed by over 500 planners and other local authority officers
- Over 5000 person-hours training and workshop sessions
- Over 200 hours of development sessions for members
- Technical support factsheets and guidance documents
- Sub-regional project grants
- Local Authority NW wide network
- Website knowledge hub and monthly newsletter



CLASP.

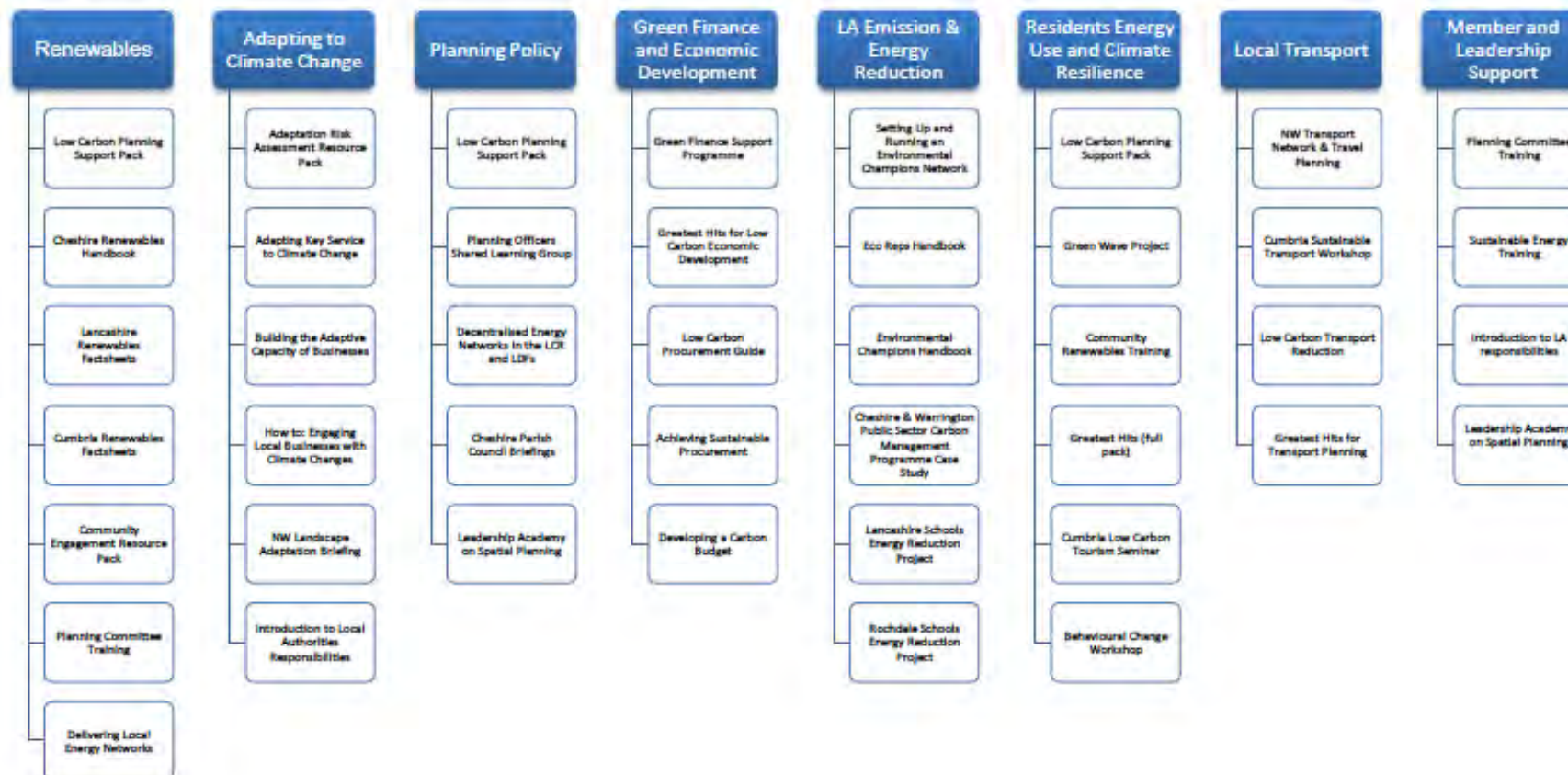
Resources

- All CLASP resources are free to access, share and adapt for non-profit use
- We encourage other regions and agencies to make use of the resources
- CLASP website provides a clear and easily navigable knowledge-hub and resource library for local authorities



CLASP KEY OUTPUTS AND RESOURCES 2008-2011

There are over 300 free resources at www.claspinfo.org from policy guidance, to case-studies, toolkits, presentations and fact-sheets. This diagram shows links to some of the key resources, you can search by yourself for more at www.claspinfo.org/resources



CLASP.

2012 and Beyond

- Networking events and facilitated knowledge exchanges
- Training and skills development
- Information provision – newsletters and website
- Project grants for innovative and replicable initiatives
- Climate Leaders Awards



CLASP.

Contact

krista@clasp-nw.info

www.claspinfo.org

www.claspinfo.org/resources



CLASP.

PLANNING AND CLIMATE CHANGE REVIEW PANEL



TECHNICAL SUPPORT FOR LOCAL AUTHORITIES

KATE FEWSON, PANEL MANAGER



CLIMATE CHANGE SKILLS FUND

- **funding to build skills and capacity of LA officers when tackling climate change issues**
- **announced by central government with draft planning policy statement: planning for a low carbon future in a changing climate (March, 2010)**
- **DCLG confirmed £9.75 million nationally for delivery**
- **moving to low carbon economy in changing climate - central to planning strategies and decisions made on planning applications**

CLIMATE CHANGE SKILLS FUND – YORKSHIRE (LGYH)

CONSISTS OF FOUR PROJECT AREAS:

1. Leadership, Skills and Support Service
2. Best Practice Hub
3. Heritage Assets and Low Carbon Renovation
4. Community Engagement Programme

PLANNING AND CLIMATE CHANGE REVIEW PANEL

WHAT IS IT? HOW CAN IT HELP? HOW DOES IT WORK? HOW DO YOU APPLY FOR IT?

- **Independent technical panel of experts**
- **Commissioned by CCSF**
- **Managed by Integreat Plus**



PLANNING AND CLIMATE CHANGE REVIEW PANEL

WHAT IS IT? **HOW CAN IT HELP?** HOW DOES IT WORK? HOW DO YOU APPLY FOR IT?

- Useful when planning officers unsure about climate change credentials

E.g.

- Construction projects
 - pre determination
- Allocations documents
- Local Development Frameworks/Local Plans
- Energy strategies

Wide remit – ask us



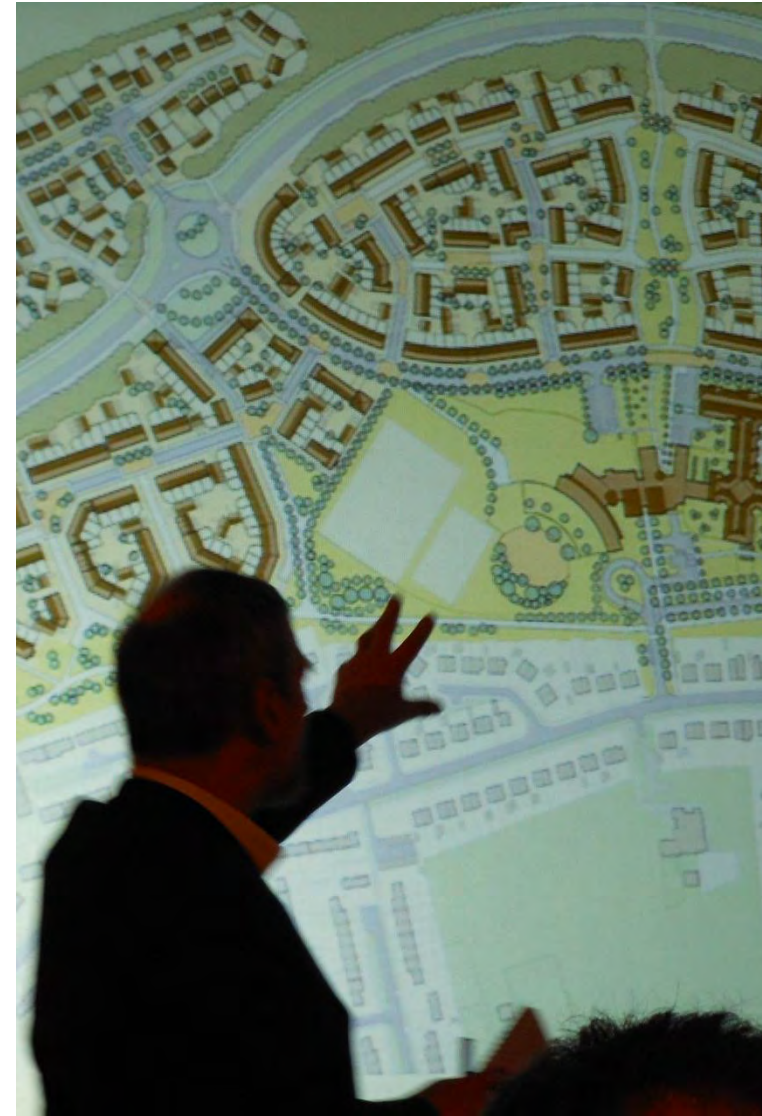
PLANNING AND CLIMATE CHANGE REVIEW PANEL

WHAT IS IT? **HOW CAN IT HELP?** HOW DOES IT WORK? HOW DO YOU APPLY FOR IT?

E.g.

- **feasibility of micro generation vs CHP for large developments**
- **reducing energy consumption of listed buildings**
- **adapting masterplans to incorporate green or blue infrastructure**
- **energy statements for planning applications**
- **policy requirements for renewables**

Size doesn't matter!



PLANNING AND CLIMATE CHANGE REVIEW PANEL

WHAT IS IT? HOW CAN IT HELP? **HOW DOES IT WORK?** HOW DO YOU APPLY FOR IT?

- **Uses a mixed panel of professionals to assess schemes**
 - Renewable energy specialists - Biomass, CHP etc.
 - Low carbon technologists
 - CSH/BREEAM assessors
 - BRE consultants
 - Flood risk specialists
 - Built environment professionals
- **Looks at feasibility of proposals and how they address climate change issues**
 - Focus on reducing energy demand
 - Renewables provision



PLANNING AND CLIMATE CHANGE REVIEW PANEL

WHAT IS IT? HOW CAN IT HELP? **HOW DOES IT WORK?** HOW DO YOU APPLY FOR IT?

Panel:

- **Advises LA in review on appropriateness**
 - Does panel agree with what's proposed?
 - Gives key recommendations
 - Can strategies/systems be improved?
- **Works with project team to address areas of improvement**
 - 30 min workshop after review to get into more detail



PLANNING AND CLIMATE CHANGE REVIEW PANEL

WHAT IS IT? HOW CAN IT HELP? **HOW DOES IT WORK?** HOW DO YOU APPLY FOR IT?

- **Based on design review methodology**
- **5 review days between now and Dec 2012 – dates to be set**
- **3 schemes per review day**
- **1hr 45mins per scheme**
- **Panel of 4**
- **Project team**
- **LA**
- **Observers**



PANEL BRIEFING



PROJECT TEAM PRESENTATION



CLARIFICATIONS, DISCUSSION AND REVIEW



SUM UP BY CHAIR



WORKSHOP



REPORT

Review Report

PCC000 Station Windfarm, Hornsea
Review 1



Planning and Climate Change Review Panel for Yorkshire and the Humber

Status of report: CONFIDENTIAL

Date of Review: 26 March 2012

Location of Review: The Guildhall, Hull

Review Description: The scheme is a wind farm in the East Riding.

Stage of planning: Submitted for planning

Background: The scheme has come to review following a request from the local authority. There are concerns about the output claimed by the developers and an independent appraisal is sought. This project was submitted to the LA in early March.

Material provided for Review: All information submitted to the LA for the planning submission.

Scheme Representatives: Stephen Smith, Windfarm International
Jeremy Jakes, Renewables are us Ltd

Factual Representatives: Andrew Clay, East Riding Council
Julia Yates, Environment Agency

Panel Members: Irena Bauman, Chair, Architect
Tony Wyatt, Urban Designer
Annie Coombs, Landscape Architect
Colin Shields, Highways Engineer

YDRS Staff: Kate Fewson, Design Review Manager
Richard Sewell, Design Review Coordinator
Rob Cullen, Assistant Urbanist



PLANNING AND CLIMATE CHANGE REVIEW PANEL

WHAT IS IT? HOW CAN IT HELP? HOW DOES IT WORK? **HOW DO YOU APPLY FOR IT?**

- Go to either Your Climate or Integreat Plus website

<http://www.yourclimate.org/pages/planning-and-climate-change-review-panel>

<http://www.integreatplus.com/submit-scheme-pccrp>

- Fill in and submit form
- Call us on **0114 213 0040** or **07809 486737**
- Email Kate Fewson - pccreviewpanel@integreatplus.com
- Ruth Hardingham - ruth.hardingham@lgyh.gov.uk or **07917 554902**

It is a **FREE** service...call us or email to discuss

THANK YOU



Supported by:



Project Part-Financed
by the European Union

European Regional
Development Fund



CABE is now part of the Design Council



Homes &
Communities
Agency

