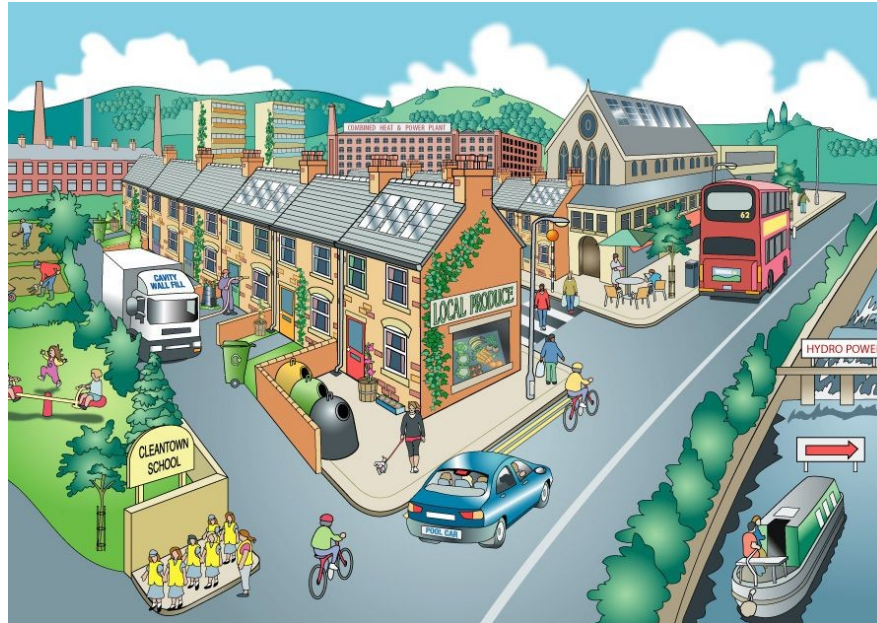


Skills for Climate Change



Low Carbon Living & Working Helena Tinker

ESF -Background



- The project is funded through ESF (European Social Fund) which is part of the European Competitiveness Programme which runs from 2007-2013
- 2008 - Call for projects under the ITM strand- innovative transnational and mainstreaming
- Projects needed to address 1 of 2 priorities
 - Priority 1 –Extending employment opportunities
 - **Priority 2 –Developing a skilled and adaptable workforce**

Themes of ITM

The Innovation, Transnationality and Mainstreaming (ITM) strand

Themes

1. Active inclusion
2. Engaging with employers
3. ICT and the digital divide
- 1. Skills for climate change and sustainable development**
 1. Demographic change –Older workers and migration
 2. Social enterprise



Skills for climate change and sustainable development

Aims to:

test and develop new ways of addressing the skills needs required to respond to the challenges of climate change and sustainable development



Skills for Climate Projects in the UK

- Skills for Climate Change – **Cornwall County Council**
- Skills for Climate Change – **London Capital Colleges**
- GreenWays to Work – **Impact Housing Association**
- Eco Advantage – **Medway Council**
- Skills for Climate Change – **Birmingham Chamber of Commerce and Industry**
- **Low Carbon Living and Working - Kirklees Council**

Key Purpose of Low Carbon Living & Working Project

- Introduce a strategic programme of **flexible training and education** to be delivered by a **network of organisations**
- Meet **local employer demands** and helps the transition to a **local low carbon economy**
- **3 year project which started in June 2009**

Target Groups



- Areas of Kirklees with **lowest academic achievement, high levels of unemployment**, literacy, numeracy and language needs
- **Employed people** within existing businesses- linked to employer demand – need for new training and skills
- **Higher level skills** in environmental & sustainable technologies – to meet employer demands

Partners (UK)

- Kirklees Council
- University of Huddersfield
- Kirklees College
- Yorkshire Energy Services
- WY Probation Service
- Green Business Network
- Kirklees Partnership
- Job Centre Plus
- Skills Funding Agency
- National Apprenticeship Service
- Connexions - career advisor



Transnational Partners



- **Kreis Unna, Germany** - Vocational training and qualifications, employee coaching in building industry, energy efficiency and renewables



- **La Mancha (FEMPCLA), Spain** - greening of SMEs, sustainable network of municipalities



- **BAN, Graz, Austria** - Sustainable business development, training for long term unemployed and disadvantaged



Targets

Outputs	Quantification
Total number of people to be supported	500
Number of people to gain basic skills	115
Number of people to gain level 2	130
Number of people to gain level 3+	85
Number of unemployed people gaining full time employment	75
Number of unemployed people gaining part-time employment	75
Level 1 horticulture or bespoke green qualifications	50
Primary research reports	3
New college/university based training modules/qualifications	5
New district wide low carbon engineering posts	5
High level eco champions	7

Project Actions

- **Level 1** – To connect people furthest away from the labour market with skills and employment , embedding skills into neighbourhood learning & unpaid work
- **Level 2** – employed people who need more technical training - new skills and qualification packages to be developed with the College and the local University
- **Higher Level training** – training for those to lead and champion change – Low carbon Engineers, Assessors
- **Research:**
 - Transnational - looking at international good practice.
 - Empathic Research – with employers to look at their needs for low carbon skills
 - Research into the low carbon skills modules in partnership with University of Huddersfield and Kirklees college – This will develop and test a number of low carbon learning modules.

Finances

- The total project budget is £1.2m (1,319,020 euro)
- £632K from ESF, and £632 match
- Transnational activity -ring fenced £63,280 (69,643 euro)



Progress to date

- Empathic Research with key stakeholders
- Project activities starting to be developed and come forward
- Meeting with local employers/College and University – developing modules to meet demands.
- Developing activity for engaging with disadvantaged groups through Adult Learning.

Project Contact

Carol Carr – Programme Co-ordinator –
Kirklees Council

Tel : 01484 416686

E-mail: Carol.Carr@kirklees.gov.uk

