


C-Plan





A collaborative approach to implementing local sustainability planning policies

Yorkshire and Humber Region
8 June 2012




Background to C-Plan

- Review of energy statements across 33 LBs for GLA
- Developed by ECSC with London South Bank University
- Designed specifically to assess planning compliance
- Prototyped with local authority planners in 2008
- PAS Case Study

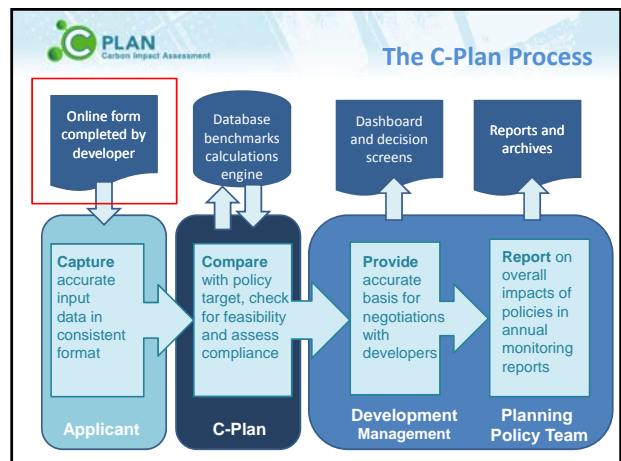
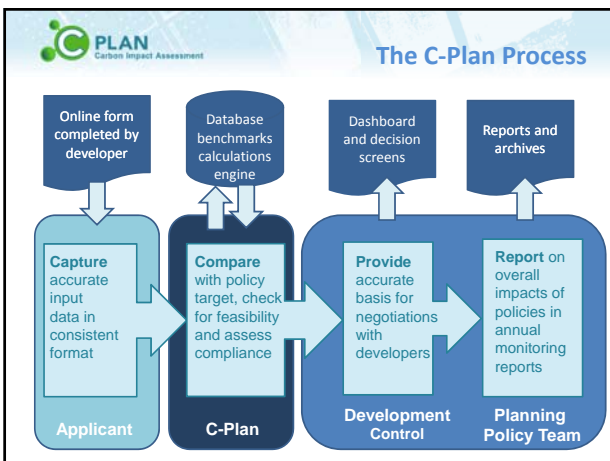
Yorkshire and Humber's Objectives

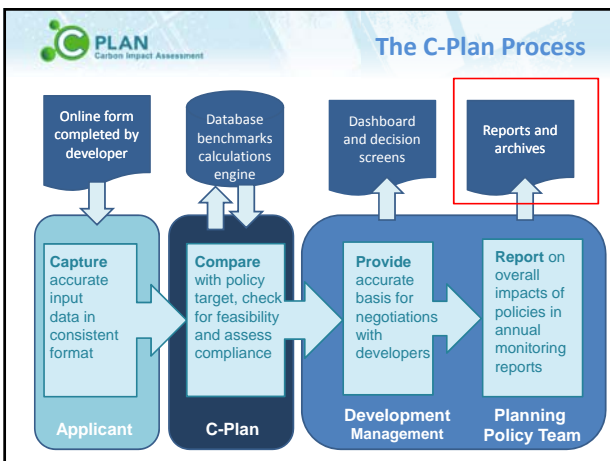
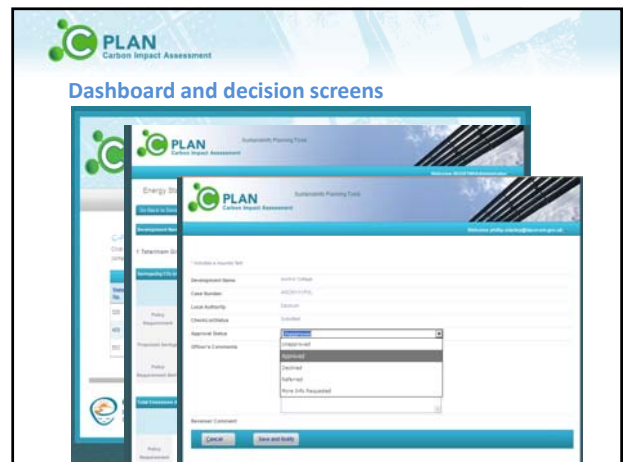
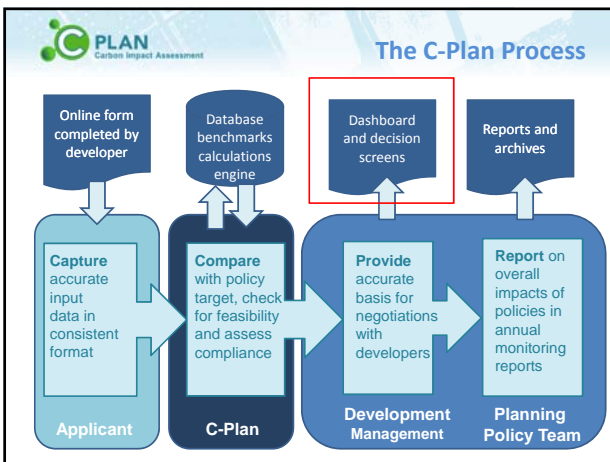
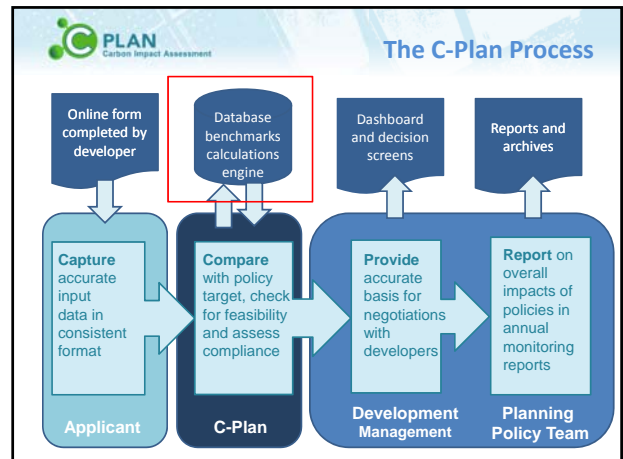
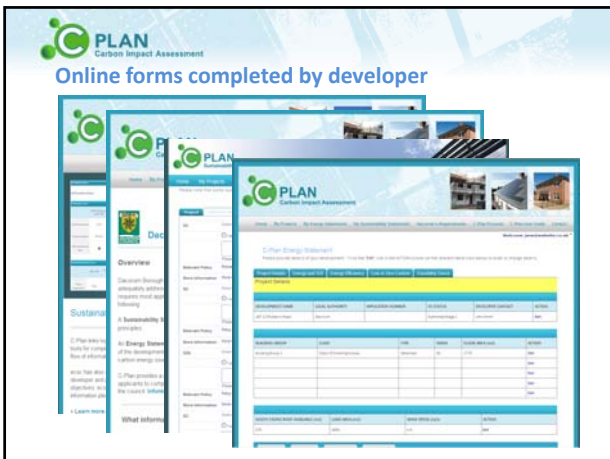
Yorkshire & Humber's Criteria	C-Plan
Cost	✓
Ease of use for LPA officers and developers	✓
Ability for the tool to deal with option scenarios	✓
Additional support for LPAs and developers	✓
Evidence of where the tool has been used for planning appeals	✓
Examples of different cases where the focus has been on carbon solutions	✓
In addition	
Monitor all sustainability policies e.g. recycling, water, flood risk, green infrastructure, biodiversity etc	✓
Endorsed by planning inspector	✓
Reporting tools for monitoring	✓
Scalable and flexible	✓
Configured to local authorities requirements	✓
Designed with planners for planners	✓



Adopted renewable energy and carbon reduction policies

Adopted Policies	Local Authorities	Renewable Energy Generation Targets	Carbon Reduction Targets	District Heat Targets
DPD's	Hambleton	✓		
	Wakefield	✓	✓	
DPD's & SPD's	Harrogate	✓		
	North York Moors	✓	✓	
SPD's	Bradford			
	Doncaster	✓		
	Leeds		✓	
	Scarborough	✓		
	Yorkshire Dales			
	Sheffield City	✓		✓





PLAN
Carbon Impact Assessment

Scalable and responsive to different policy targets

25,000m ² new office tower	76 new 1 and 2 bed apartments	35,000m ² McLaren sports car factory	Extension to shopping centre
 GSHP, roof mounted wind turbines and connection to off-site CCHP	 10% energy efficiency improvement over Part L and combination of SHW and PV	 Integrated energy strategy using advanced MVHR and cooling, connection to on-site CHP	 Low energy fit out and roof mounted PV to achieve RE and CO ₂ reduction targets

PLAN
Carbon Impact Assessment

Three Rivers District Council Adopted Core Strategy (2011)

CPI
Overarching Policy on Sustainable Development
Requirements for Applicants

Applications for all new residential development of one unit and above and for all new commercial development will be required to submit a 'CPLAN Energy and Sustainability Statement' demonstrating the extent to which sustainability principles have been incorporated into the location, design, construction and future use of proposals, and the expected carbon emissions.

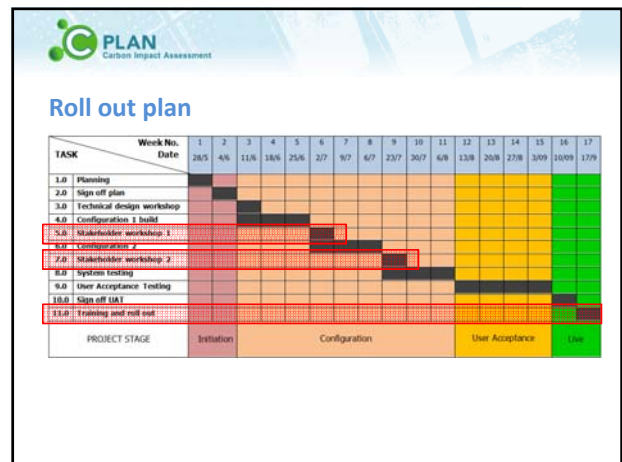
"The Council has piloted the use of C-PLAN, a carbon assessment and monitoring tool, since 2008. This has clearly been a collaborative process which has enabled the Council to secure consistently higher levels of performance than the minimum standard set by the Building Regulations 2010. The requirement for a minimum of 10% of carbon emissions savings to be obtained from on-site renewable/low carbon technology has emerged from consultations and monitoring by C-PLAN. In these circumstances it is clear that the strategy's pro active approach to encouraging sustainable development is justified and meets the viability tests in paragraph 33 of the PPS1 Climate Change Supplement"

INSPECTOR'S REPORT ON THE EXAMINATION INTO THE THREE RIVERS DISTRICT COUNCIL CORE STRATEGY DEVELOPMENT PLAN DOCUMENT 16 September 2011

PLAN
Carbon Impact Assessment

C-Plan Services

- Unlimited user licence for all LPAs in Yorkshire and Humber
- Clear, consistent and accurate 'dashboards' for non-specialists
- Instant on-line referral facility for planning officers
- Complete technical support for planning officers from energy specialists
- Web pages 'personalised' to each local authority
- Configuration to local policy requirements and targets
- A full suite of energy, carbon and sustainability tools
- Developer input forms linked directly to LPA web content
- Edit tools for sustainability checklists
- Regularly updated database with accurate figures based on actual developments
- Training and user support for planners



PLAN
Carbon Impact Assessment


PLAN
Carbon Impact Assessment

www.sustainabilityplanner.co.uk

sean.rendall@ecsc.uk.com

01483 749040