

## Your Climate Partnership Board

23 April 2010, 1.45 – 3.15pm.

Wheeler Hall, Leeds.



### AGENDA

Time	No.	Item	Lead
1345	1	<b>Welcome and apologies for absence</b>	AB
	2	<b>Minutes of the last meeting</b>	AB
	3	<b>Minutes of the Adaptation Sub Group</b>	JC
1400	4	<b>'Challenging our Progress – one year on' De-brief</b> <i>Priority sponsors to introduce their revised action plans and feedback from mitigation and adaptation discussion at the event.</i> <ul style="list-style-type: none"><li>• Strategy &amp; Monitoring</li><li>• Built Environment</li><li>• Transport</li><li>• Health Services</li><li>• Business</li><li>• Land Management</li><li>• Citizen Engagement</li><li>• 'Free thinkers' group</li></ul>	Priority sponsors
1445	5	<b>Climate Change Skills Fund</b> <i>Overview of the recently announced Climate Change Skills Fund that will be managed by the YoHr Space Climate Change Board</i>	JC
1500	6	<b>Activities at the city region level</b> <i>Update on climate change activity taking place at the city region level, including the Local Carbon Framework in Leeds City Region</i>	TG [Verbal]
1510	7	<b>Any other business</b>	All

## MINUTES OF THE CLIMATE CHANGE PARTNERSHIP MEETING: 21 JANUARY 2010

### Attendees

Jeremy Walker	-
Gail Hammond	Environment Agency
Cllr Arthur Barker ( <b>Chair</b> )	Hambleton District Council
Jon Clubb	LGYH
Nicola Baylis (Secretariat)	LGYH
Debbie Rosen	Yorkshire Forward
Amanda Crossfield	Yorkshire Futures

### Apologies

Liz Edgington	BITC
Joanne Pollard	CO <sub>2</sub> Sense
Paul Bellotti	East Ridings of Yorkshire Council
Simon Bowens	Friends of the Earth
Tim Godson	GOYH
Carole Cozens	LGYH
Roger French	Strategic Health Authority
Anna Steynor	UK Climate Impacts Programme
Liz Jones	YoHr Space Climate Change Board
Stewart Clewlow	Yorkshire Forward
Gordon Rogers	Yorkshire Water

### 1. Welcome, Introduction and Apologies

The Chair welcomed members to the meeting and the apologies were noted.

### 2. Minutes

The minutes of the last meeting were agreed as an accurate record.

### 3. Matters Arising

At the last meeting, members discussed the possibility of linking the 'One Year On' event/high-level meeting with the launch of Progress in the Region in March. It was confirmed that this had been explored but would not be feasible.

It was noted that the new 'Your Climate' logo, and relevant templates, had been circulated to members via e-mail.

Following discussions at the last meeting, members acknowledged that it was unlikely that the Partnership, or the Regional Flood Defence Committee (RFDC), would get a seat on the Joint Regional Board (JRB). However, it was confirmed that Cllr Barker had been appointed as Chair of the RFDC, thereby creating a formal link between the Partnership and the RFDC.

It was confirmed that Liz Jones, Chair of the YoHr Space Climate Change Board, had had accepted the invitation to join the Partnership.

A diagram illustrating how the Partnership links in with other regional structures was tabled for information.

#### 4. Highlight Reports

##### Strategy and Monitoring

In addition to the information contained within the report, the following points were noted:

- A workstream meeting would be taking place on 11 February 2010 – members were welcome to attend.
- IRS evidence hearings are currently being arranged – further details would be circulated as soon as they become available. Members felt that the Partnership should be involved in these hearings and it was agreed that a document should be pulled together on behalf of the Partnership.

Jon Clubb

***Post Meeting Note: Evidence hearings have now been postponed until after the general election.***

##### Built Environment

In addition to the information contained within the report, the following points were noted:

- This is still work in progress.
- The Housing and Regeneration Board had a broad remit and the Partnership also needs engage with other delivery partners including the Homes and Communities Agency and National Energy Action.

Jon Clubb to liase as required

##### Transport

The report was noted.

Members expressed their disappointment that the representatives from both the Housing and Regeneration and Transport Boards were not in attendance at the meeting. This made it difficult for the Partnership to appreciate how climate change is embedded into the work programme of these two boards.

Jon Clubb to follow up.

##### Business

The report was noted.

##### Land Management

In addition to the information contained within the report, the following points were noted:

- It may not now be appropriate to produce a Regional Land Management Climate Change Strategy – the new Regional Land Management Forum will discuss as its meeting in March. It was agreed that this should be removed from the Plan for now.
- It was agreed that a list of Forum members would be circulated to the

Partnership for information and that regular updates on its work would also be provided.

- Gail confirmed that she was compiling a set of reports and other documents relating to land management and climate change. Members were asked to forward any relevant documents to Gail.

Gail Hammond

### Citizen Engagement

The report was noted.

All

### Health

No report was submitted and, as Roger French was unable to attend the meeting, no verbal update was given.

## **5. 'One Year On' Event Proposal**

Members considered the report highlighting proposals for the 'One Year On' event. In the discussion that followed, a number of points were raised:

- Need to submit each of the seven areas of the Plan to wider challenge.
- The event needs to be less political and therefore less likely to be affected if it falls within the Statutory Restricted Period.
- The event should be workshop focussed.
- What should the region be delivering? – An ethics debate could be interesting.
- It would be good to have some 'provocative' speakers.
- Need to focus on one or two key themes.
- It is important to remember the reason for the event – performance against the Plan and how we can improve delivery.
- It was agreed that the event should be arranged for the second half of April.
- March could be too early for a high-level meeting as too difficult to organise within the timescales. May be worth postponing until after the election.
- It would be good to have a high-level meeting in March though. Would be worth checking diaries - start with Rosie Winterton MP and go from there. It was noted that Government Office would lead on briefing the Regional Minister.
- The high-level meeting does not necessarily have to link into the 'One Year On' event. Could it link into the IRS evidence and policy options as it would be helpful to see how the high-level attendees would feed in?

Jon Clubb

Tim Godson

It was agreed that Jon would liaise with colleagues and redraft the agenda for the 'One Year On' event. The revised draft should then be circulated to the Partnership for comments.

Jon Clubb

## **6. Economic Implications of the Climate Change Act**

Debbie Rosen informed members that that there were some concerns regarding the results of this report, therefore this item would be deferred to a future meeting.

## **7. Yorkshire and Humber Regional Committee – Carbon Emissions in the Yorkshire and Humber Region: Call for Evidence**

Members were informed that LGYH would be submitting a response to the

call for evidence, and they were asked whether they would like to see a separate response submitted on behalf of the Partnership.

It was agreed that the Partnership should submit its own response, documenting the relationships and coordination at regional level and emphasising the importance of the IRS in reducing carbon emissions. It was also agreed that the final draft should be circulated to members for comment prior to submission.

Jon Clubb

## 8. Adaptation Sub Group Update

Members were informed that the Sub Group had met earlier that month to have a debrief on PIP Week and to plan future work. This will include:

- NI 188 work – with Yorkshire and the Humber set to host an event for the Northern regions in March.
- Regional Adaptation Study work.
- Work on the Adaptation Plan.

It was confirmed that work to formalise the activities of the Sub Group was underway. This would include a formal procedure for reporting back to the Partnership.

## 9. Any Other Business

### YoHr Space Climate Change Board

The Chair informed members that discussions had taken place regarding the YoHr Space Climate Change Board becoming the commissioning arm of the Partnership. This would help address the fact the Partnership itself is not a delivery body. Debate was also continuing at Chief Executive level regarding the role of Functional Sub Regions in tackling climate change. Jon Clubb was hoping to meet representatives from each Functional Sub Region over the coming months.

### Local Authority/NHS Workshop

Jon put forward a proposal from Roger French to hold a joint half-day workshop for all Local Authority leads and NHS PCT leads with the intention of having paired representatives in each district.

The objectives of the workshop, which would be held in late April, would be to re emphasise and reinforce the shared agenda across these two sectors, establish and/or reinforce local and regional networks, review the DEFRA Climate Change projection, hear examples of developing practice in Local Authorities and PCTs and identify what needs to be done to accelerate progress within and between this potentially important local partnership.

Members gave support to this proposal and it was confirmed that further details would be circulated as they became available.

***Post Meeting Note: This potential event will be postponed, with effort concentrated on delivering the One Year On event for the Partnership.***

### Yorkshire Futures

Amanda updated members on a couple of reports that had recently been commissioned. *Developing an Ecosystem Approach for the Yorkshire and*

Jon Clubb/  
Roger French

*Humber IRS* will be published in March and *Yorkshire and Humber Flood Resilient Development* will be published in April.

Sustainable Development Board

The Chair stated that a seat on the new Sustainable Development Board had been allocated to the Chair of the Partnership. However, he felt that this opportunity should be open to any member of the Partnership. It was agreed that Amanda would progress this with the Board secretariat.

Amanda  
Crossfield

Nicola Baylis, Business Services Officer  
Local Government Yorkshire and Humber

## Regional Adaptation Sub-Group Meeting

Wednesday 7<sup>th</sup> February 2010  
Hosted by Yorkshire Futures, Leeds

### Attendees

Amanda Crossfield (Chair)	Yorkshire Futures
Alexis Fennell	Kirklees Council Environment Unit
Vince Carter	Forestry Commission
Dave Cherry	Leeds City Council
Gary Arnold	East Riding of Yorkshire Council
Gail Hammond	Environment Agency
Jon Clubb	GOYH
Tim Godson	GOYH
Bernd Hoermann	Sheffield City Council

### Apologies

Andy Horrocks	Yorkshire Forward
George Munson	Leeds City Council
Richard Wilson	Natural England

### General Notes:

1. Work on Adaptation Locality Sheets still outstanding (Jon / Andy)
2. The iRS Evidence Hearing has been postponed until after the local & national elections

#### 1. Welcome, Introduction and Apologies

The Chair welcomed members to the meeting.

AC

#### 2. Minutes

The minutes of the last meeting were agreed as an accurate record.

AC

#### 3. Terms of Reference

Agreed to broaden the ToR to include functional sub-regions and also broaden more generally to include relevant adaptation projects that the board might want to discuss.

JC

#### 4. RIEP Adaptation Projects

The Extreme Weather Events Media Trawl has finished in Doncaster and is ongoing in Rotherham. When the reports are complete they will be published.

BH

The aim is to get everyone to Level 1 by March, but realistically might not be achieved until the summer.

All to note.

#### 5. N188 Workshop for the Northern Regions – 25 March 2010

East & West Midlands are now on board and all at the same stage. Look for people to volunteer to speak to small groups/show slides and hold informal discussions to get people interested. Invites to bring a friend be issued.

All to consider

TG

**6. One Year One Event**

Cllr Barker is keen for this to be a more working session, challenging what progress has been made, move things along. A more interactive day. Jon Clubb will draft a plan of how things are now with highlighted changes. This will be a theme based day with small groups of discussions to get a real sense of how things are moving along.

JC

Emphasis was put on that this even will not be political, no press or politicians.

Suggestions for where the event could be held are welcome.

Jon Clubb will contact colleagues at the beginning of March for a meeting to plan the event.

JC

**7. Any Other Business**

Vince Carter has information about the Forestry Commission which can be issued to the group and confirmed the mapping is available for viewing.

VC

Tim Godson will issue a useful LGA publication with UKCP09 link about understanding adaptation.

TG

Gail Hammond will issue a 'Living with Climate Change' public flier and a 'Decision Making Framework' for adaptation.

GH

**8. Date of Next Meeting**

The next meeting will take place on 27<sup>th</sup> April 2010 from 2pm to 4pm. The venue for this meeting will be The Environment Agency, Leeds and will be hosted by Gail Hammond.



## ADAPTATION SUB-GROUP – DRAFT TERMS OF REFERENCE

Drafted: 9 February 2010

### Operational Context

Adapting to a changing climate is an emerging field with many delivery bodies and partners at an early stage of responding to this challenge. The Climate Change Partnership for Yorkshire and Humber has a key role in supporting work on adaptation, particularly through embedding the recommendations of the Regional Adaptation Study and supporting Local Strategic Partnerships. The Adaptation Sub-Group will facilitate this at a practical level by bringing together practitioners to design and share advice and best practice across localities, sub-regions, and the region – whilst making links at a national level.

### Aims

- To support the Climate Change Partnership for Yorkshire and Humber at a practitioner level on adaptation to climate change.
- To plan and develop support for delivering against National Indicator 188 for local authorities and their partners, in particular those who have adopted NI188 within their Local Area Agreement (LAA).
- To coordinate and support adaptation projects region wide including those being delivered with funding from YoHr Space.
- To embed relevant key recommendations from the Regional Adaptation Study into the Climate Change Plan for Yorkshire and Humber.
- To build links across the region, inter-regionally, and with national partners to support improved performance and efficiency.

### Meetings

Meetings take place as and when required, which is approximately every 4 – 8 weeks. The venue and Chairing of the meetings will be rotated across all members.

### Reporting

The group will report its progress and flag issues both to the Climate Change Partnership for Yorkshire and Humber, and the YoHr Space Climate Change Board – through submission of action lists from each meeting.

### Membership

- **Chair.** Rotating, taken by host of each meeting.
- **Membership.** Attendees to be drawn from local authorities that have NI188 in their LAA, sub-regional representatives in relation to YoHr Space funded adaptation projects, and relevant regional agencies.

Name		Organisation
Gary	Arnold	East Riding of Yorkshire Council
Diana	Adamson	Selby DC
Vince	Carter	Forestry Commission
Dave	Cherry	Leeds CC
Jon	Clubb	LGYH
Amanda	Crossfield	Yorkshire Futures

Jon	Follows	Kirklees
Tim	Godson	GOYH
Gail	Hammond	Environment Agency
Bernd	Hoermann	Sheffield CC
Andy	Horrocks	Yorkshire Forward
George	Munson	Leeds CC
Richard	Wilson	Natural England

A photograph of a wind farm in a rural landscape. In the foreground, there is a field of tall, golden-brown grass. Several white wind turbines are visible, with one large one on the right side of the frame. The background shows rolling hills under a blue sky with scattered white clouds.

# Climate Change Plan for Yorkshire & Humber

*Your Climate, Our Future*

**2009 – 2014**

Yorkshire & Humber Climate Change Partnership  
*Updated April 2010*

## **A REALISTIC VISION FOR 2020**

Yorkshire and Humber is seriously exposed to climate change. For example, as a region we have more properties and businesses at serious flood risk than any other, apart from London. The Humber estuary is vulnerable to rising sea levels. Our industrial base of power stations, oil refineries and chemical plants also means that we have one of the most carbon intensive economies in Europe. Their competitiveness will be under threat as demands for lower emissions increase.

The task of transforming our economy and investment priorities to take account of these factors is urgent. Failure to move quickly will not only add to the risk of potentially damaging climatic events. It would also make our economy less able to compete in the new world of tough emissions targets and growing customer demand for green practices. By contrast if we adopt the right policies and promote change now, we can also make the most of the opportunities that climate change may bring. This is a huge challenge, but it can be done.

To illustrate what this might mean in practice, a realistic view of the region in ten years time would include.

- Climate change mitigation and adaptation underpin future regional strategy and with leadership displayed at regional and local levels.
- The economy is more diverse, with the development of innovative, resource efficient, low carbon products and services in all sectors.
- Businesses use carbon trading effectively to stimulate investment in emissions reduction and new low carbon business opportunities.
- Waste is reduced by making products with fewer resources, breaking the link between economic growth and waste growth.
- Renewable energy forms an increasingly substantial proportion of our energy mix and the region is effective at reducing emissions from this sector.

- Resource efficient living is becoming part of every day lives. We have reduced consumption and waste and many more people are buying local.
- Car use is reducing year on year. Cycling and walking or public transport are much more popular ways to travel.
- All new development is zero carbon. Most of the region's homes and all public buildings have been retrofitted to improve resource efficiency.
- There is less waste. More than half is recycled or composted. More than 75% of our municipal waste has a value recovered from it.
- Agriculture and forestry are achieving higher production in a longer growing season supplying more local markets, and are effectively maintaining soil quality and managing more extreme weather with new disease and pest threats.
- We are better prepared for the management of extreme weather events, including floods and droughts
- We are able to help the natural environment, its habitats and biodiversity stay healthy and have been able to adapt to the changes through an extensive network of green corridors and infrastructure.
- Cities and towns are creating networks of green infrastructure, designed to minimise effects of heat waves in urban areas, to enhance biodiversity and help manage flood risk.

## THE CHALLENGE

### Key facts

The Regional Adaptation Study has highlighted some of the climate changes we might see by the 2050s (refers to the period 2040 – 2070).

- Annual average temperatures between 1.8°C - 1.9°C
- Summer average temperatures up between 2.1°C - 2.5°C
- Extreme hot temperatures up between 2.8°C - 3.2°C
- Annual rainfall down by approximately 6%
- Winter rainfall up by 12 – 17%
- Summer rainfall down by 22 – 26%
- Winter snowfall down by 54 – 68%
- Annual average wind speeds down by approximately 1%
- Winter average wind speeds up by approximately 1%
- Soil moisture annual average down by around 5 – 11%
- Mean sea level increase of 0.35 metres, with more severe surges.

By the 2050s\* we expect average temperatures will have risen by between 1.8°C and 1.9°C. Summer rainfall will have reduced by between 22 – 26%, but winter rainfall will have increased by 12 – 17%. The growing season may lengthen further. The prospect of warmer weather, more time to grow things and less rain may sound appealing, but it hides big threats.

These temperature changes will bring a rise of 0.35 metres in the mean sea level of North Sea, with storm surges being significantly higher. This might not seem much. However, virtually all of Hull and much of the Humber sub region is already below high tide level. So, it's easy to see that any rise in sea level brings a higher risk of serious flooding. The increases in air temperature will also bring more extreme weather events.

\*refers to the period 2040 - 2070

Yorkshire and Humber will experience more extreme weather events. The flooding, heat waves, storm damage and drought that will result will have most impact in urban areas where population densities are greatest. Pressure on water supply will also grow. Some species and habitats in the region will suffer serious threats, although some others may benefit. Air quality is also likely to suffer. Public health services will face some big new challenges. Agriculture too will have to deal with new pressures and threats. Coastal areas will experience increased land erosion, loss of intertidal habitats and more tidal flooding.

The impact of climate change will be global. So there will be knock-on effects for the UK and our region, for example as a result of greatly increased competition for food and water resources or migration. There are already pressures to reduce carbon and other greenhouse gas emissions so as to contribute to reducing the rate of future global climate change. This places new demands on business. But the demand for new technologies, processes and products will also create a new business environment – leading to new opportunities and exposing us to new risks and competition.

We must prepare for these changes and adapt. At the same time we need to help prevent further climate change by reducing carbon emissions in Yorkshire. In this regard there are already regional and national targets to cut carbon/greenhouse gas emissions and increase supply of energy from renewable sources. New long term emissions targets will also form part of the Climate Change Act.

As the figures below show, meeting our region's existing climate change targets is a big challenge which so far we are not managing to meet. The region is home to several power stations that burn fossil fuels to produce electricity and industry that provides goods and services for export. This means that although much of the energy, goods and services produced are exported to the rest of the country we produce high levels of greenhouse gas emissions as a region. Recent studies suggest that without significant change emissions will increase steadily, while national target levels call for reductions. In similar vein, the region's power generation from renewable sources in 2007 had achieved only about a quarter of the modest target level set for 2010.

Although achievement is lagging behind the targets, there are very many programmes and initiatives in the region which will help to improve delivery. These are led by organisations in every sector – local councils, companies and business organisations, voluntary groups, health trusts, regional agencies, government bodies and many others. Examples include Kirklees Council's Warm Zone Initiative, which aims to tackle fuel poverty by providing cavity wall and loft insulation, and the Whizz Go car club – providing corporate car sharing to Leeds City Council. There are growing networks between concerned individuals; and organisations. Awareness of the issues is rising. But more will need to be done if the challenging national and regional targets are to be met. By setting out a framework for ensuring that as many plans, policies and decisions affecting the region can take account of climate change issues the task should become more manageable.

This framework for action will not be static. It will need to be reviewed in light of significant new regulation and knowledge. It will be developed as new information becomes available, as new technologies come on stream and new initiatives taken up. The legal context has developed significantly with the Climate Change Act 2008 which became law on 26 November 2008 introducing the world's first long term legally binding framework to tackle the dangers of climate change.



## THE PLAN

This action plan sets a strategic direction for managing and combating climate change in the Yorkshire and Humber region over the next five years.

The plan does not list lots of detailed actions. It is not specifically linked to CO<sub>2</sub> targets and cannot provide a breakdown of how they will be achieved. There are already a number of national, regional and local initiatives to deliver these targets. The plan sets out a way forward, which will become clearer in the developing Yorkshire & Humber Strategy - that will bring together the Regional Economic Strategy (RES) and Regional Spatial Strategy (RSS).

It identifies gaps and sets out added value so partnership working will bring greater impacts rather than listing the mitigation and adaptive actions that every organisation needs to be putting in place.

The plan's purpose is to demonstrate the principles for regional and local leaders, and for decision makers in all sectors of what we require to help the region adapt to climate change, and to reduce our contribution to its causes. It covers areas where discussions with regional and local stakeholders suggest that current work and programmes on their own will not deliver the outcomes required and joint action will be required.

Although it begins with a vision of how Yorkshire and The Humber might want to look in 2020, this plan is intended to inform and influence developments over the next five years. Its framework for action is divided into nine priority areas:

- **STRATEGY AND MONITORING**, because new regional and local plans such as the Integrated Regional Strategy, Sustainable Community Plans and Multi Area Agreements being developed. The latest information on climate change impacts and forecasts needs to be an integral part of them. The Plan puts a responsibility on the region to track progress and take remedial action where necessary.
- **THE BUILT ENVIRONMENT**, because almost half of our carbon emissions come from the operation of our housing stock. Although the Government aims to have all new build carbon neutral from 2019 at least 70% of the housing stock we will have in 2050 is already built to much lower carbon efficiency standards.
- **TRANSPORT**, because around 30% of greenhouse gas emissions come from transport. Research also tells us that making significant progress will be very difficult without a big reduction in car use or the development of low carbon alternatives.
- **HEALTH SERVICES**, because the health sector must deal with the growing impact of extreme weather on health and welfare, which will get more serious as the population ages. The health sector also generates significant carbon emissions.
- **BUSINESS**, because industry and business account for around a quarter of carbon emissions, and because there are major business opportunities in developing low carbon technologies, products and processes.

- **LAND MANAGEMENT**, because the way the land is managed needs to adapt to changing weather patterns and can help to increase the resilience of the region to the impact of climate change. Different land management practices can also reduce the impact of change on species and agriculture, as well as create opportunities for sustainable food and energy supply, and carbon sequestration.
- **CITIZEN ENGAGEMENT**, because adapting to change and reducing future emissions require all of us to be prepared to do things differently and to make choices which at first seem difficult and inconvenient.
- **ENERGY**, because the consumption of fossil fuel based energy sources is the biggest direct influence on the volume of greenhouse gas emissions.
- **WASTE**, because waste streams are important potential sources of materials and energy. Increasing recycling and reducing landfill will significantly reduce greenhouse gas emissions.
- **WATER**, because the pressures on water resources and water and sewerage infrastructure will increase. Water efficiency is key to reducing the impact of water treatment and pumping on carbon emissions and ensuring security of water supply over the longer term. The region already recognises its vulnerability to flooding and must improve resilience to increased flood risk as a result of climate change.

## **PRIORITY AREA: STRATEGY AND MONITORING**

**Sponsor:** Debbie Rosen, Yorkshire Forward

The region is currently developing a single integrated regional strategy – the Yorkshire and Humber Strategy (YHS) – with addressing climate change considered a strategic regional priority. The YHS will make a significant contribution towards climate change mitigation and the development of the low carbon economy, helping meet the Government’s greenhouse gas targets and carbon budgets, as well as highlighting the need for increased action on adaptation.

The YHS will also need to take into account current obligations under Planning Policy Statement 1 on Sustainable Development and its supplement on climate change, as well as making a contribution to meeting the national requirements of Climate Change Act (2008).

The Climate Change Partnership will seek to strongly influence the development of the YHS. Progress against targets will need to be closely monitored.

### **Outcomes:**

- YHS development is informed by robust evidence on carbon emissions reduction, including emissions trajectories and an evaluation of the carbon impacts of delivering the various policy options
- Action on climate change is mainstreamed within the YHS, in terms of adaptation as well as mitigation
- Subsequent monitoring of the YHS Implementation Plan demonstrates that any emissions targets contained within the YHS are being met, with regional and local action moving towards a low carbon, climate resilient economy

Action	Lead partners	Timescales	Progress
<b>YHS to include a strong focus</b>	LGYH, Yorkshire Forward	Ongoing	Evidence on climate change to inform YHS

Action	Lead partners	Timescales	Progress
<b>on climate change, supporting the creation of a low carbon economy whilst also providing direction on emissions cuts and building resilience to climate impacts</b>			development was collected up to the end of March 2010. This will now be considered in the development of policy options and policies. Importantly, there will be a need to ensure that climate change is considered as a cross cutting theme throughout the YHS, rather than treated as a standalone issue. This will include, for example, considering the need for resource efficiency in business and industry, ensuring that development is located in a way that minimises the risk of flooding, and addressing equity issues such as fuel poverty
<b>Climate Change Partnership to fully engage in and influence the development of the YHS, in terms of both mitigation and adaptation</b>	Climate Change Partnership	Ongoing	Climate Change Plan for Yorkshire & Humber and Regional Adaptation Study were put forward as key evidence to inform the YHS. The Partnership also coordinated additional evidence from across the partnership members, via Yorkshire Futures. A member of the Partnership sits on the Independent Sustainability Board.
<b>Leadership and advocacy on the need to mitigate and adapt to climate change to be displayed across the region</b>	Joint Regional Board, Yorkshire Forward, LGYH	Ongoing	At its December 2009 meeting the Joint Regional Board (JRB) identified climate change and the low carbon economy as areas where the region has potential to make radical progress and, in certain aspects, to become a global leader. Work is now underway to

Action	Lead partners	Timescales	Progress
			<p>establish what this means for the region and for the YHS.</p> <p>Leadership is also being demonstrated by local authorities across the region and by Functional Sub-Regions. For example, the Leeds City Region (LCR) is one of ten national Low Carbon Framework pilot areas. The LCR has been developing an ambitious 'urban eco-settlement' programme, aiming to deliver 28,000 homes at least at Level 4 of the Code for Sustainable Homes, and at Eco-Towns PPS standards in 4 main regeneration areas. LCR is also aiming to deliver a Domestic Energy Efficiency Programme jointly across the sub-region. This is intended to be similar to the leading Kirklees home insulation scheme - aiming at 300,000 homes insulated by 2015.</p>
<b>Carbon trajectory research to be undertaken to inform the policy choices of the YHS</b>	Yorkshire Forward, LGYH	Summer 2010	Regional carbon trajectories are currently being integrated into the Regional Econometric Model and will form a key aspect of future scenario development. This in turn will inform the policy choices that will be included within the YHS. The scenarios for which carbon trajectories will be produced are still to be finalized, however the results of the modeling should be available in Summer 2010

## **PRIORITY AREA: BUILT ENVIRONMENT**

**Sponsor:** Carole Cozens, Local Government Yorkshire & Humber.

Approximately 46% of the UK's total carbon emissions are generated from the operation of our building stock. Encouraging the adoption of sustainable building design standards, maintenance and refurbishment can help deliver homes that use far less energy, provide affordable warmth, and help reduce greenhouse gas emissions.

A key driver for improved design standards will be through enhanced energy efficiency of new building stock, with the aim of all new housing being 'zero carbon' from 2016. However, the majority of housing stock in Yorkshire & Humber that will be around in 2050 had already been built – so retrofitting and refurbishment will play a key part in reducing carbon emissions. Better understanding of carbon emissions modeling tools to determine the impacts of housing policy will help to determine future resource allocation.

The past 12 months has seen considerable change across the sector with a lot of activities being mainstreamed within new organisational structures. Therefore, this priority within the overall plan will need to reflect these and further changes over the coming months.

### **Outcomes:**

- To establish a clear regional pathway so that the region becomes a model for low carbon housing.
- High level leadership and awareness of the need for housing sector related action to reduce green house gas emissions and adapt to climate change.
- Significantly improved communications between partners on current and planned activities to aid coordination, collaboration and best use of resources.
- Improved awareness, skills and support on retro-fitting existing homes and also new technologies (such as renewable energy infrastructure), design and construction.

Action	Lead partners	Timescales	Progress
Build relationship with the Regeneration & Housing Board through a report every six	LGYH with support from partners.	Six monthly, from summer 2010.	Manager from the Regeneration & Housing board sponsors this priority. Paper to RRHB on 11 June on climate change

Action	Lead partners	Timescales	Progress
months on climate change action, issues and risks.			key issues.
Boost regional skills and expertise in sustainable design and construction, in particular through maximising opportunities through existing skills initiatives.	Homes & Communities Agency 'Academy' with Integreat Yorkshire and Envirowise.	2010 - 2013	New guide launched by Envirowise
Facilitate dialogue between funders and small business and organisations to help drive forward use of microgeneration technologies	Yorkshire Forward Microgeneration Partnership National Energy Action	Summer 2010	<ul style="list-style-type: none"> <li>• This is a new action</li> </ul>



## **PRIORITY AREA: TRANSPORT**

**Sponsor:** Stuart Clewlow, Yorkshire Forward.

The transport sector is a major source of green house gas emissions – and this continues to rise. It is therefore vital that the region investigates and delivers ways of moving towards a low carbon transport system. With large parts of the region being rural, travel is still heavily reliant on car use. Additionally, the forthcoming reduction on public spending will mean there is less money for large scale infrastructure projects and more focus on lower cost ‘softer’ measures such as behaviour change.

### **Outcomes:**

- Implementation of a wide range of interventions to reduce the carbon impact of transport
- Identifying interventions to maximise the carbon efficiency of all modes of transport as a result of undertaking regional ‘Delivering a Sustainable Transport System’ (DaSTS) studies.
- A sector better informed on risk from a changing climate and that can prepare better and prioritise actions.
- Effective coordination, collaboration and sharing of best practice between the across the public sector and with private sector delivery organisations to reduce carbon emissions from transport.

Action	Lead partners	Timescales	Progress
<b>Work towards a low carbon and sustainable transport system in Yorkshire and Humber by implementing a wide range of measures</b>	Regional Transport Advisory Board, Yorkshire Forward, Integrated Transport Authorities, Local Authorities, Highways Agency and Network Rail and public transport operators	Ongoing	<ul style="list-style-type: none"><li>• Mixed progress across the region. Measurement of the impact has only been undertaken for a limited number of interventions</li></ul>
<b>Delivery of DaSTS studies:</b> - <b>Leeds City Region (LCR) Connectivity</b>	Yorkshire Forward has overall responsibility with GOYH, LGYH, LCR and SCR as key partners.	November 2009 – June 2011	<ul style="list-style-type: none"><li>• All the studies are progressing well. Carbon reduction is a key factor in decision making in both the connectivity studies.</li></ul>

Action	Lead partners	Timescales	Progress
<ul style="list-style-type: none"> <li>- <b>Sheffield City Region (SCR) Connectivity</b></li> <li>- <b>Urban Dynamic Model Development</b></li> <li>- <b>Land Use and Accessibility</b></li> </ul>	<p>The two connectivity studies are being run by LCR and SCR. The other studies being run by YF.</p> <p>All have funding from Department for Transport</p>		<ul style="list-style-type: none"> <li>• The LCR study has produced a baseline report, developed its modelling capability and the long list of potential interventions has been through a high level sift to give a 'medium' list.</li> <li>• The SCR study has produced a draft baseline report and has begun sifting the long list of possible interventions.</li> <li>• The regional Urban Dynamic Model is being updated so that it can be used to assess transport the impact of transport interventions and potential land use allocation. A key part of the upgrade is the improvement of CO<sub>2</sub> emission calculations.</li> <li>• The Land Use and Accessibility study is preparing a data depository of public transport services and potential land use allocations together with a tool for assessing PT accessibility to these sites. Public transport data has all been collected and some progress has been made in obtaining potential land use allocations.</li> <li>• The connectivity studies will feed into a regional intervention strategy for DfT and other funding. The UDM will be used to assess the impact of the interventions.</li> <li>• Outputs from all the studies will feed into</li> </ul>

Action	Lead partners	Timescales	Progress
			the development of the Yorkshire and Humber Strategy.
<b>Mapping of sub-regional and local governance to better understand action on climate change in the transport sector.</b>	LGYH (CC Coordinator) with support from Yorkshire Forward and the Transport Advisory Board.	June 2010	<ul style="list-style-type: none"> <li>• This is a new action.</li> </ul>
<b>Targeted guidance, briefings and case studies drawn from the Regional Adaptation Study and UKCP09 to support resilience awareness and planning.</b>	Yorkshire Forward and Climate Change Partnership Adaptation Sub-Group, with support from LGYH officer members and GOYH.	March 2011	<ul style="list-style-type: none"> <li>• This is a new action.</li> </ul>
<b>Establish a suitable forum to capture activity, share best practice and identify areas of collaboration on reducing emissions across all sectors involved in transport.</b>	Climate Change Partnership and Transport Advisory Board.	November 2010	<ul style="list-style-type: none"> <li>• This is a new action.</li> </ul>

## **PRIORITY AREA: HEALTH SERVICES**

**Sponsor:** Roger French, Strategic Health Authority.

Recent national and regional major weather events greatly raised the importance in considering the health impacts of climate change. There is a key role the health and resilience sectors can play in preparing for these impacts whilst working with other key sectors. The Health Protection Agency\* has already outlined the key impacts and how agencies need to respond – but these actions are mostly longer term than the scope of this plan. The shorter term actions, including those needed to prepare for future challenges are given below.

The health sector is keen to play its part in reducing emissions and needs to follow actions outlined under Priority Area 2 (Built Environment) and Priority Area 5 (Business). The actions to reduce the impacts of climate change can also have benefits to the health of the population, such as increased cycling and walking and improving green spaces and planting trees. This can be positively utilised in selling the benefits of action on climate change.

### **Outcomes:**

- Results from research projects circulated promptly to key stakeholders, with responses tailored to needs of the population.
- Annual Community Risk review to take account of UKCP09 scenarios and other developing regional and sub-region data sources.
- Any behaviour change communications tools that support Your Climate to include health impact and links to lifestyle and well-being.
- Support continuous development of carbon reduction projects across the health sector.

Action	Lead partners	Timescales	Progress
Regional NHS Carbon Reduction Steering Group Established	Strategic Health Authority	2009 - 10	Group established. Links established with Climate Change Partnership. Events held for trust 'carbon leads'. New group 'Climate Change Management

Action	Lead partners	Timescales	Progress
			Group' now has requirement to track progress in the region.
Carbon Reduction Plans produced for each NHS Trust	NHS Trusts, through the Regional NHS Carbon Reduction Steering Group	2009-10	Partnership working with CO2 Sense Yorkshire. Workstreams established: <ul style="list-style-type: none"> <li>• Energy management</li> <li>• Procurement</li> <li>• Transport</li> <li>• Waste</li> </ul> Carbon Management Framework now established
Ensure future research is shared in the region to help assess risk and necessary adaptive actions for vulnerable groups.	Climate Change Partnership Board members, through Directors of Public Health	Ongoing, reviewed annually.	
Regional and local resilience fora to keep risk under review using climate impact modelling, including direct impacts such as disease and air pollution.	Health Protection Authority		
Establish joint working with local government on carbon reduction	Strategic Health Authority and Local Government Yorkshire & Humber	2010-11	Proposal to host joint NHS / LA workshop on carbon reduction in the summer 2010.
Behaviour change work driven	Climate Change Partnership –	2009-10	Links made between Department of Health

Action	Lead partners	Timescales	Progress
by the Climate Change Partnership picks up links to health and well-being.	working with Citizen Engagement workstream	2010-11	and the Local Area Climate Change Network – utilising lessons learned from the health sector on changing behaviours. Climate Change Management Group to consider recent West Midlands report 'Health Effects of Climate Change in the West Midlands'.

Are there any longer term targets we can use?

## **PRIORITY AREA: BUSINESS**

**Sponsor:** Joanne Pollard, CO2 Sense

Our region has a legacy of heavy industry which means our regional emissions are higher than average. Statutory carbon budgets mean that we will have to reduce emissions substantially in order to play our part in meeting the national targets. New regulatory regimes including renewables targets, CRC and carbon trading will all impact on businesses. However this presents opportunities as well – for new products and services, as well as new grants and funding mechanisms. Our region is uniquely placed to deliver Carbon Capture and Storage, and our advanced manufacturing base combined with our many universities means we could play an important role in developing new technologies. However, the vast majority of our businesses are SMEs – a hard-to-engage sector which will nonetheless have a major role to play in delivering carbon cuts.

Action	Lead partners	Timescales	Progress
<b>Deliver practical support for businesses to improve their resource efficiency, and increase business use of carbon footprinting</b>	Strategic lead from YF with delivery through CO2 Sense, Business Link, MAS, and national delivery partners (WRAP, Carbon Trust, Envirowise etc)	Ongoing	<ul style="list-style-type: none"><li>• CO2Sense Resource Efficiency programme</li><li>• Partnership development with Carbon Trust</li><li>• BRIEG programme</li><li>• Support for sub regional green business clubs and regional chambers.</li></ul>
<b>Establish high level business leadership group of Execs from major regional companies in order to increase business awareness of the benefits of developing low carbon products and services</b>	CO2Sense, BiTC	Ongoing	<ul style="list-style-type: none"><li>• Co2Sense Leadership training programme developed with PwC</li><li>• Regional low carbon summit held at Drax in conjunction with YF, PwC and CBI – March 10.</li><li>• BITC programme successfully delivered – leadership group and seeing is believing events.</li></ul>
<b>Facilitate the delivery of the</b>	CO2Sense	Ongoing	<ul style="list-style-type: none"><li>• First spur of pipeline – Hatfield project</li></ul>

Action	Lead partners	Timescales	Progress
<b>Yorkshire and Humber Carbon capture and storage project.</b>			<p>successfully bid for £180m of ERF funding.</p> <ul style="list-style-type: none"> <li>• Yorkshire and Humber designated as Low Carbon Economic area for Carbon Capture and Storage in March 10.</li> <li>• Yorkshire and Humber CCS project profiled on Newsnight – Feb 10.</li> </ul>
<b>Enable Business to plan for climate change adaptation</b>	CO2Sense/ Climate Change Partnership	Ongoing	<ul style="list-style-type: none"> <li>• Adaptation risks within regional supply chain – study conducted with Acclimatise, CO2Sense and Asda.</li> <li>• Adaptation sessions delivered at Low Carbon best practice event in Harrogate in Dec 09.</li> </ul>
<b>Support businesses to deploy renewable energy</b>	Co2 Sense, YF	Ongoing	<ul style="list-style-type: none"> <li>• Wood fuel infrastructure programme</li> <li>• Hydro scheme at Settle</li> <li>• Wood Pellet Mill</li> <li>• Renewable Energy programme including investments in Valley Wind, Emley AD, Bioflame and Greenfrog</li> </ul>
<b>Supporting Businesses around new regulatory/ incentive and funding regimes</b>	CO2Sense	Ongoing	<ul style="list-style-type: none"> <li>• Carbon trading Yorkshire – regional learning and best practice collaboration in advance of CRC</li> <li>• CRC events and tailored support</li> <li>• ROC support</li> <li>• Regional awareness around Carbon Trust interest free loans and Salix funding</li> </ul>



Action	Lead partners	Timescales	Progress
<b>Ensure recommendations from RAS are incorporated into key regional documents</b>	Adaptation study team with support from CC Co-ordinator	Ongoing	<ul style="list-style-type: none"> <li>• RAS has been submitted to IRS evidence base.</li> <li>• Further work needed to raise awareness of the study within sector teams at YF and within other organisations</li> </ul>

## **PRIORITY AREA: LAND MANAGEMENT**

**Sponsor:** Gail Hammond, Environment Agency

Climate change adds to the pressures on the use and management of land in Yorkshire and Humber Region. We need to balance the requirements for food, biodiversity, flooding, forestry, wetlands, bio-fuels, development, people and the economy. The way the land is managed will be significant in providing resilience to climate change and contribute to minimising greenhouse gas emissions. We need to build on the activity already occurring in this sector in response to climate change issues. The wide range of activities and the number of organisations involved adds to the complexity of the issues for this sector. Current land management practices can be enhanced by a coordinated approach which maximises the resources of the Region with the aim of ensuring climate change adaptation and mitigation.

### **Outcomes:**

- Provide a coordinated and coherent approach to key land management plans and activities, with the aim of optimising land management activities to address climate change.
- Report on the current picture of land management in the Region, with respect to climate change adaptation and mitigation.
- Enable practitioners to make links between their own and other organisations' activities and encourages better coordination.
- Land management practices with regard to Climate Change are improved in the region.
- Barriers to climate change orientated land management are highlighted and action taken to resolve issues.
- Monitor and report on progress

Action	Lead partners	Timescales	Progress
Regional Climate Change Land Management Forum (YHCCLM Forum) established	Environment Agency, Forestry Commission, Natural England Regional Climate Change Coordinator	May 2010	<ul style="list-style-type: none"><li>• First meeting of Forum May 2010 to be chaired by David Dangerfield completed.</li><li>• Delays in formation of Forum due to changes in Lead partner structure.</li><li>• Formation of a Task Group for the Forum comprising of lead partners</li></ul>

Action	Lead partners	Timescales	Progress
Produce a regional overview of the current climate change land management.	Y&H Climate Change Land Management Forum Task Group (YHCCLM Task Group)	April 2010	<ul style="list-style-type: none"> <li>• Due end April 2010</li> </ul>
Provide a framework for sharing good practice knowledge and information.	YHCCLM Task Group and Forum	Ongoing	
Produce Regional climate change land management guidance for Region	YHCCLM Task Group and Forum	October 2010	
Identify barriers to land management climate change issues and take forward actions resolve those issues	YHCCLM Task Group and Forum	April 2011	
Monitoring and reporting progress on Forum and key issues	YHCCLM Task Group and Forum	Ongoing	

\* All actions include both mitigation and adaptation issues

## **PRIORITY AREA: CITIZEN ENGAGEMENT**

**Sponsor:** Tim Godson, Government Office for Yorkshire and The Humber

A key factor in delivering both carbon emission reduction, protecting resources and developing resilience to a changing climate is changing the behaviours of individuals, communities, businesses and the public sector. Through their work on pro-environmental behaviour\*, Defra produced a “model of behaviour change” that can be applied to policy making, where the intention is to help people make better choices. For further information see: <http://www.defra.gov.uk/evidence/social/behaviour/index.htm>

DECC’s national “Act on CO2” campaign raises awareness of carbon emissions and provides advice on saving energy. Run by the Energy Saving Trust, the “Act on CO2” advice line provides free advice to all citizens on energy efficiency, microgeneration and renewable energy, water efficiency and waste reduction. For further information see: <http://actonco2.direct.gov.uk/actonco2/home.html>

In Yorkshire and The Humber, public and private organisations recognise the significance of this priority area in tackling climate change both locally and regionally. The plan is aimed at local and regional bodies but the Partnership want to ensure that information is accessible to help support all individuals on how they can take their own steps to address climate change.

### **Outcomes:**

- Co-ordinated campaigns help regional and local bodies bring about changes in behaviour that reduce emissions, protect resources and improve resilience
- Production of a regionally/ locally focused guide to share examples of best practice and case studies on behaviour change
- Future generations aware of the need and are informed on how to make pro-environmental behaviour choices
- Yorkshire and Humber citizens better able to make pro-environmental choices and local communities able to respond
- Pro-environmental behaviours promoted that reduce carbon emissions in the region

Action	Lead partners	Timescales	Progress
<p><b>Establish a group to look at the behaviours to be addressed and the level to address them i.e. look at national, regional and/or local level and examine how programmes of activity can be taken forward in Yorkshire and Humber</b></p> <ul style="list-style-type: none"> <li>• Need to support current local and sub-regional work, build on examples such as the Care4Air work in South Yorkshire</li> <li>• Utilise businesses as influencers of customer choice as employers of staff, use customers to influence services and products available</li> </ul>	<p>GOYH</p> <p>Local Authorities</p> <p>VCS sector - e.g. FoE/ WWF/ YHREF/ Faith sector</p> <p>Business representatives such as BITC</p>	<p>Completed main requirement by March 2010; Developed two new actions for next steps on this (see below)</p>	<ul style="list-style-type: none"> <li>• In May 2009 held small focus group with representatives from Energy Saving Trust, Local Authorities, Local Strategic Partnerships and Sustainable Schools Partners' Network. The group recognised that a better understanding of regional activity was needed before further action could be proposed.</li> <li>• In January 2010 held Citizen Engagement-Changing Behaviours workshop to consider the citizen engagement-changing behaviours agenda on climate change in the region - exploring the work already being taken forward by organisations, and identifying potential opportunities for further development. Attendees included representatives from the Climate Change Partnership, YoHr Space Climate Change Board, Energy Saving Trust, Local Authorities, Local Strategic Partnerships, Environment Agency, Department of Health and Friends of the Earth. The outcomes from the day are informing work going forward in local areas, collaboration through YoHr Space, and further development of the regional climate change plan.</li> </ul>
<p>Use intelligence and evidence already gathered from local</p>	<ul style="list-style-type: none"> <li>• YoHr Space Climate Change Board</li> </ul>	<p>March 2011</p>	

Action	Lead partners	Timescales	Progress
area to define opportunities and inform areas of support on the changing behaviours/ citizen engagement agenda within the region to reduce emissions, protect resources and improve resilience	<ul style="list-style-type: none"> <li>Local Authorities</li> <li>Local Strategic Partnerships</li> </ul>		
<p>Clearer access to current information on national, regional and local campaigns and activity on behaviour change and opportunities to share best practice within the region. Including:</p> <ul style="list-style-type: none"> <li>CCP website (Your Climate) to provide links to enable citizens to gain information on how to take positive action</li> </ul>	<ul style="list-style-type: none"> <li>LGYH/ GOYH</li> <li>YoHr Space Climate Change Board</li> <li>YHREF Hub</li> <li>Energy Saving Trust</li> <li>Local Authorities</li> <li>Local Strategic Partnerships</li> <li>Voluntary and Community sector</li> <li>Business representatives</li> </ul>	Annual Progress – report March 2011	
<b>Use schools as excellent places to encourage environmental good practice and so that young people sell the benefits</b>	GOYH/ Sustainable Schools – LA/ LEA/ Education for sustainable	Initial work completed by March 2010; Ongoing	Regional Improvement and Efficiency Partnership (RIEP) funded programme on sustainable schools operating in three of the sub-regions. For further information see:

Action	Lead partners	Timescales	Progress
<p><b>to their families to encourage in the home.</b></p> <p><b>Co-ordinate activity between the Climate Change Partnership and Sustainable Schools work.</b></p>	development	programme of activity – Annual progress	<p><a href="http://www.yohrspace.org.uk/content/climate-change-0">http://www.yohrspace.org.uk/content/climate-change-0</a></p> <p>Ongoing activity in the region through the Yorkshire and Humber Sustainable Schools Partners' Network. For example a joint North East/ Y&amp;H workshop was held on 22<sup>nd</sup> March 2010 looking at "Sustainable Schools: How can Local Authorities support schools better". For further information on network and regional activity see:</p> <p><a href="http://www.teachernet.gov.uk/sustainableschools/about/about_detail.cfm?levelselected=5&amp;id=227">http://www.teachernet.gov.uk/sustainableschools/about/about_detail.cfm?levelselected=5&amp;id=227</a></p>
<p><b>CCP website (Your Climate) to provide links to enable citizens to gain information on how to gain information on how to take positive action</b></p> <ul style="list-style-type: none"> <li>To provide links to existing websites and information at the national, regional and local level</li> </ul>	GOYH/ YHREF Hub		<p>Your Climate was updated for the climate change plan launch event in March 2009. The website is currently being upgraded to new server with new format and content to include:</p> <ul style="list-style-type: none"> <li>Progress updates on the regional action plan</li> <li>Mitigation resources</li> <li>Adaptation resources</li> <li>Local authorities section</li> <li>All meeting papers / presentation</li> </ul>
<b>Take forward annual programmes of co-ordinated activity in Yorkshire and Humber to support the other</b>	Contact with other groups where cuts across specialist areas e.g. Waste Regional	Ongoing programme of activity - Annual	Continued liaison with the Energy Savings Trust to raise awareness of national campaigns

Action	Lead partners	Timescales	Progress
<p><b>areas for action in the CCP.</b> <b>Including:</b></p> <ul style="list-style-type: none"> <li>Activities to tackle a range of waste prevention behaviours amongst the general public and business, with the overall aim of reducing waste to landfill and increasing Local Authority efficiency.</li> </ul>	<p>Advisory Group on waste minimisation</p> <p>GOYH/YHWPP Board</p>	<p>Progress</p>	<p>The Yorkshire and Humber Waste Prevention Programme (YHWPP) works with 22 Local Authorities (LA) across the region to tackle a number of waste prevention behaviours. The priorities for 2009 – 2010 are Love Food Hate Waste (LFHW) and Business Waste.</p> <p>The Regional Improvement and Efficiency Programme (RIEP) has provided funding for the programme priorities for 2009-2010. Including the <b>Love Food Hate Waste</b> (LFHW) project which develops the campaign in the 22 Local Authority areas in the region raising awareness of the issues around food waste and ultimately seeking to divert tonnage from the residual waste stream.</p> <p><a href="http://www.lovefoodhatewaste.com/yorkandnorthyorks">http://www.lovefoodhatewaste.com/yorkandnorthyorks</a></p>
<p><b>Develop work on adaptation behaviours including developing green space and planting appropriate tree species, not covering gardens with hard services, and signing up to alerts</b></p>			<p>The regional UK Climate Change Projections workshops in September 2009, attended by a wide range of representatives - from local authorities to universities to business - highlighted the issues surrounding adaptation and behaviours.</p>

To Note: \* Diagram of Defra headline behaviour goals still to be included, for reference



## ***INTEGRATED CROSS-CUTTING THEMES***

### **PRIORITY AREA 8: ENERGY**

Although the region is a substantial energy producer, with large shares of both national oil refining capacity and power generation, the key to reducing future emissions lies in reducing demand through lower use and better management.

We want to see more efficient energy use in all sectors and reduced demand through alternative modes of transport and improved processes, while also stimulating cleaner power generation from both conventional and new, renewable sources.

Actions in other priority areas – especially the built environment, transport and business – will make a major contribution here. And importantly other strategies exist to promote these objectives and monitor progress towards them

To co-ordinate these activities, the region has an established Energy Infrastructure Strategy with active programmes led by Yorkshire Forward on renewable energy, carbon capture and storage, heat networks and energy services and fuel poverty.

The Climate Change Partnership will work with the Regional Energy Forum to ensure that progress against targets for emissions and renewable fuels is tracked and monitored.

Details can be found at:

- [Regional Energy Infrastructure Strategy](#)
- [Vision for Biomass](#)
- The Status of Biofuels in Yorkshire and Humber
- Vision for Coal
- [A Carbon Capture and Storage Network for Yorkshire and Humber](#)
- [Energy Services and Heat Networks](#)
- [Regional Affordable Warmth Action Plan](#)

## **PRIORITY AREA 9: WASTE**

There are both regional and local strategies for the management of municipal waste that will continue to lift recycling rates and reduce landfill, including by recovery of energy.

Commercial and business waste management and minimisation is of great importance too and has the potential to increase the resource efficiency of business in the region (see Priority Area 5).

Minimising domestic waste through more effective engagement of the individual citizen is an important dimension in Priority Area 7, where strategies for combining local initiatives and regional work will be investigated.

Waste management is part of the current regional spatial strategy and will need to be included in the new integrated regional strategy. The Climate Change Partnership will work with local authorities and others to track and monitor progress against already established waste reduction targets.

## **PRIORITY AREA 10: WATER**

Climate Change will put pressure on water resources and water and sewerage infrastructure. On average, summer rainfall will reduce, resulting in lower availability and increased demand, as well as affecting river water quality. Changed winter rainfall patterns and variability in extreme rainfall events will increase the risk of flooding from all sources.

Water is a key issue for adaptation, and the way we pump, treat, clean, heat and use water has profound implications for energy use. Water efficiency is therefore crucial to both reducing carbon emissions and adapting to reduced water availability. Work is being done to ensure water resources, water supply and water quality are safe-guarded for the future. The Region already recognises its vulnerability to flooding and the need to take cooperative and coordinated action to improve its resilience to future change.

There are a number of national and regional policies, which will further assist with the management of climate change impacts on the water sector. For example, the Climate Change Act will introduce a statutory requirement for water companies to report on the actions they are taking to respond to climate change.

Other priority areas, particularly the built environment, business and community engagement, will play a key role in contributing to water related adaptation. The Climate Change Partnership will monitor progress in addressing the impact of climate change on the water sector through a review of all these areas.

Relevant water related documents include:

- [Environment Agency Water Resources Strategy 2009, \(Regional Action Plans end of 2009\)](#)
- [Water Company water resource management plans \(final due July 2009\)](#)
- [Water Company Business Plans 2010-2015 \(final to be submitted April 2009\)](#)
- [Catchment Abstraction Management plans for Yorkshire and Humber Catchments](#)
- Drought Plans (due 2010)
- [Catchment Flood Management Plans for the Yorkshire and Humber Catchments](#)
- [Humber Flood Risk Management Strategy](#)

# Climate Change Skills Fund

Meeting with Climate Change Managers  
Regional Improvement and Efficiency Partnerships  
26 March 2010

Graham Davis  
Planning Directorate  
Communities and Local Government



- **Fund announced on 9 March by John Healey with draft PPS *Planning for a Low Carbon Future in a Changing Climate* as part of climate change policy package**
- **Draft PPS has policies on measures to reduce carbon, to adapt to a changing climate and on helping communities to bring forward renewable energy projects**
- **Moving to a low carbon economy in a changing climate will be central to planning strategies and decisions on planning applications**
- **Planning policy contributes to LCTP, RES, HEM, LCFs and in responding to UKCP09 projections**



- To deliver new planning policy, as part of wider action on climate change, £9.75 million available to develop skills and improve capacity across local authority responsibilities
- £9m to be allocated to RIEPs in April for 2010 -11
- £0.75 for evaluation, RTPI CPD and other possible projects

**Fund helps delivery of Government policies and commitments**

- **Renewable Energy Strategy July 2009 said DECC and CLG would provide up to £10 million to ensure right skills and knowledge available within planning community at local and regional level.**
- **The skills fund will work alongside other initiatives including:**
  - **Funding for renewable energy and low carbon PPA demonstration projects**
  - **Expert network run by Centre for Sustainable Energy (CSE)**
  - **CSE development of training on technology types for planning authorities**
  - **Dissemination of planning policy on energy from waste via Defra/DECC workshops promoting CHP**

- Empowerment White Paper - *Communities in control: real people, real power* July 2008 said CLG would fund LPAs to develop and share best practice in community participation in planning
- Empowerment funding of CSE for development of programme of support to community groups engaging with planning system with focus on climate change
- Local Carbon Frameworks: £3m available for capacity building, research and piloting of voluntary climate change mitigations in 9 LAs

- **Facilitating the delivery of increased renewable energy supply through the activities of local authority planning departments**
- **Helping local authorities more broadly, including training for members. Draft PPS covers both mitigation and adaptation. This objective will therefore include helping local authorities consider need for adaptation to climate change**
- **Helping planning departments to promote better community engagement in the planning process, including on renewables.**

- **Discussion of initial thoughts about contents of RIEP programmes.**
- **Need to build on what exists rather than develop completely new projects (unless they can be delivered within 1 year).**
- **Programmes can be short, but must demonstrate efficient ways of combating climate change**
- **Agreement on process for next few months**

- **Completed proformas to be submitted to CLG, copied to IDeA, by 30 April.**
- **CLG hope to agree way forward with RIEPs on their programmes in May**

- **In developing and implementing programmes.**
- **As well as IDeA, and regional and local partners, partnerships could include working with:**
  - **Planning Advisory Service**
  - **Commission for Architecture and the Built Environment**
  - **Town and Country Planning Association**
  - **Royal Town Planning Institute**
  - **Local and Regional Adaptation Programme Board**

- Information from RIEP programmes and quarterly monitoring reports will inform CLG Planning Skills & Capacity Building Co-ordination Board and briefing of Ministers
- Information on skills fund will be on CLG web-site
- CLG and IDeA will appoint contractors to evaluate use of the skills fund





## Climate Change Skills Fund

Yorkshire & Humber Work Programme  
April 2010 – March 2011

**DRAFT**

Contact		
Name	Jon Clubb	Karen Fletcher
Position	Regional Climate Change Coordinator	YoHr Space Coordinator
Organisation	Local Government Yorkshire & Humber	YoHr Space
Address	18 King Street, Wakefield, WF1 2SQ	19 King Street, Wakefield, WF1 2SQ
Telephone	01924 331561	01924 335589
Email	<a href="mailto:Jon.clubb@lgyh.gov.uk">Jon.clubb@lgyh.gov.uk</a>	<a href="mailto:Karen.fletcher@yohrspace.org.uk">Karen.fletcher@yohrspace.org.uk</a>
Website	<a href="http://www.lgyh.gov.uk">www.lgyh.gov.uk</a>	<a href="http://www.yohrspace.org.uk">www.yohrspace.org.uk</a>

## 1. Overview

[Provide an overview of the programme's aim, scope and objectives. It might briefly state the proposed major deliverables, success criteria and constraints. It might include a top-level summary of major milestones, required resources, schedule, and use of the allocated budget].

## 2. Objectives

[Define the objectives of the programme and outline the proposed success factors (by which satisfaction of the objectives will be determined)].

	Programme objective	Outcome
1	<i>'Climate Change Skills Academy'</i> To <b>improve skills</b> across of all relevant planning and non-planning officers in the public sector on climate change mitigation and adaptation.	Knowledgeable staff and LSP partners that can effectively apply planning policy and other initiatives to reduce carbon emissions and ensure adaptation to climate change in their locality.
2	<i>'Climate Change Leadership Academy'</i> Structured <b>development for elected members</b> to support their understanding of the cause, effects and impacts of climate change and how to tackle it locally in decision making.	Confident elected members who are advocates for planning policies and their positive impact on the locality and community.
3	<i>'Climate Change Planning Policy Lab'</i> To provide <b>high level support on planning policy</b> implementation and to strengthen policy around unresolved issues (e.g. retro-fitting historical buildings).	Robust implementation of planning policy* on climate change with evidence on how to improve policy further on carbon reduction and adaptation.
4	<i>'Climate Change Best Practice Hub'</i> Comprehensive <b>mapping of best practice</b> with worked examples available to share.	Fast track improvement and enhanced reputation of action driven from within the region.

5	<p><i>'Neighbourhood Energy Engagement Programme'</i></p> <p>Improved <b>community engagement, understanding and participation</b> in the use and benefits of renewable energy technologies.</p>	<p>Increased uptake of micro-renewables in localities with improved support for larger area based low or zero carbon schemes.</p>
---	--	---

\* [Regional Spatial Strategy planning policy ENV5: Energy](#)

### 3. Programme Deliverables and Partners

[Provide a description of the main workstreams within the programme. Provide a programme plan indicating the various work activities required to deliver the programme deliverables, including contents, costs and timing of the activities. Provide a description of the delivery model for the programme, particularly the role of external organisations in delivering the programme].

<b>Objective 1: Climate Change Skills Academy</b>				
To improve skills across of all relevant planning and non-planning officers in the public sector on climate change mitigation and adaptation.				
<b>Action</b>	<b>Owner</b>	<b>Delivery partners</b>	<b>Timescale</b>	<b>Costs</b>
Basic level training for local authority and LSP officers on climate change; renewable, low and zero carbon technologies; sustainable design and construction; and stakeholder engagement 'place shaping'.		Local Strategic Partnerships (LSPs)		
Accredited training for planning and associated professionals on; renewable, low and zero carbon technologies; sustainable design and construction; and stakeholder engagement.				

Dedicated training on the practical implementation of adaptation principals in urban design.				
--	--	--	--	--

<b>Objective 2: Climate Change Leadership Academy</b>				
Structured development for elected members to support their understanding of the cause, effects and impacts of climate change and how to tackle it locally in decision making.				
<b>Action</b>	<b>Owner</b>	<b>Delivery partners</b>	<b>Timescale</b>	<b>Costs</b>
Dedicated training for planning board members on renewable, low and zero carbon technologies.		Links with LGYH Member Development programme.		
Sub-regionally themed events on key issues (e.g. marine wind, carbon capture, on-shore wind, microgeneration).				

<b>Objective 3: Climate Change Planning Policy Lab</b>				
To provide high level support on planning policy implementation and to strengthen policy around unresolved issues (e.g. insulating historical buildings).				
<b>Action</b>	<b>Owner</b>	<b>Delivery partners</b>	<b>Timescale</b>	<b>Costs</b>
Develop a small pool of highly technical expertise that can be 'called off' by local authorities to: <ul style="list-style-type: none"> <li>Advise on climate change mitigation and adaptation opportunities when master planning new sites or when</li> </ul>				

<p>addressing smaller projects.</p> <ul style="list-style-type: none"> <li>• Challenge developers who seek to avoid implementation of planning policy, such as renewable energy production.</li> </ul>				
<p>Develop clear and locally accepted extensions to permitted development rights to:</p> <ul style="list-style-type: none"> <li>• Remove further minor applications from the system; and</li> <li>• to make it easier for householders to improve energy efficiency or install renewable energy generation capacity.</li> </ul>				
<p>To develop planning policy to help improve energy efficiency and renewable energy generation in historical / listed buildings and in conservation areas.</p>		<p>LA building, university building – for example. External Partners: English Heritage, CABI, Yorkshire Energy Services.</p>		
<p>Pilot study into making a heritage asset more energy efficient / to generate renewables without upsetting historic or architectural interest.</p>		<p>(Core RIEP funding can be up to 10% capital (not CC Skills Fund though)).</p>		

<b>Objective 4: Climate Change Best Practice Hub</b>				
Comprehensive mapping of best practice with worked examples available to share.				
<b>Action</b>	<b>Owner</b>	<b>Delivery partners</b>	<b>Timescale</b>	<b>Costs</b>
Collate baseline information on plans, policies and action at local, sub-region, regional and national level.		Utilise <a href="http://www.yourclimate.org">www.yourclimate.org</a> as a depository for all projects under this objective.		
Mapping and sharing of best practice around implementation of policy (low carbon / adaptation).				
Develop links with Low Carbon Frameworks to develop models for carbon reductions 40% (2020) and 80% by (2050).		<i>Is this feasible?</i>		
Sharing of best practice around BREEAM and Code for Sustainable Homes (CSH), especially overcoming cost of certification, monitoring and enforcement.				
Produce worked examples and case studies for decentralised energy and adaptation to climate change.				
Comprehensive signposting of existing help, including communication of new initiatives.				

<b>Objective 5: Neighbourhood Energy Engagement Programme'</b>				
Improved community engagement, understanding and participation in the use and benefits of renewable energy technologies.				
<b>Action</b>	<b>Owner</b>	<b>Delivery partners</b>	<b>Timescale</b>	<b>Costs</b>
Develop awareness of initiatives such as the Feed in Tariff, Renewable Heat Incentive		Energy Savings Trust		
Encourage grass roots activity that promotes and supports the benefits of local renewable energy projects.		(e.g. North East has done engagement on wind farms)		
Provide up to date guidance to householders on permitted development rights and opportunities to install renewable technologies.		Microgeneration Partnership		
Wider engagement and involvement with other public and voluntary sector bodies.		Natural England, Environment Agency, Global Action Plan, National Energy Action...		

## **5. Programme Management Structure**

[This section will include information related to managing, reporting and monitoring of the programme].

Work on the Climate Change Skills Fund will fall under the YoHr Space Climate Change Board's work programme. Chaired by a local authority Deputy Chief Executive with senior officers representing sub regions and with strategic advisors from the partners including the Government Office, IDeA, the Environment Agency – the board is well placed to support delivery. The board has a

strong track record of quickly drawing together stakeholders from across the region to scope, design and deliver work programmes at the regional, sub-regional and local level. Much of our earlier work has been as a direct result of consultation with local authorities and their Local Strategic Partnerships.

YoHr Space requires all recipients' of funding to complete comprehensive project briefs for funding under £50k and full project initiation documents for projects over £50k. Grant funding is paid to recipients quarterly in arrears only on receipt of completed performance reports, which are used to monitor the RIEP programme overall. For climate change related projects approval of grant funding is delegated to the YoHr Space Climate Change Board.

The YoHr Space Climate Change Board currently meets monthly and receives verbal updates on all projects and a quarterly written programme highlight report. The Board reports to the YoHr Space Programme Delivery Group of Chief Executive Officers who have oversight of all the work programmes across YoHr Space. An elected member level board, Chaired by Cllr Roger Stone OBE of Rotherham Council, provides the overall strategic direction for YoHr Space. A diagram of governance structures on climate change is included at annex A.

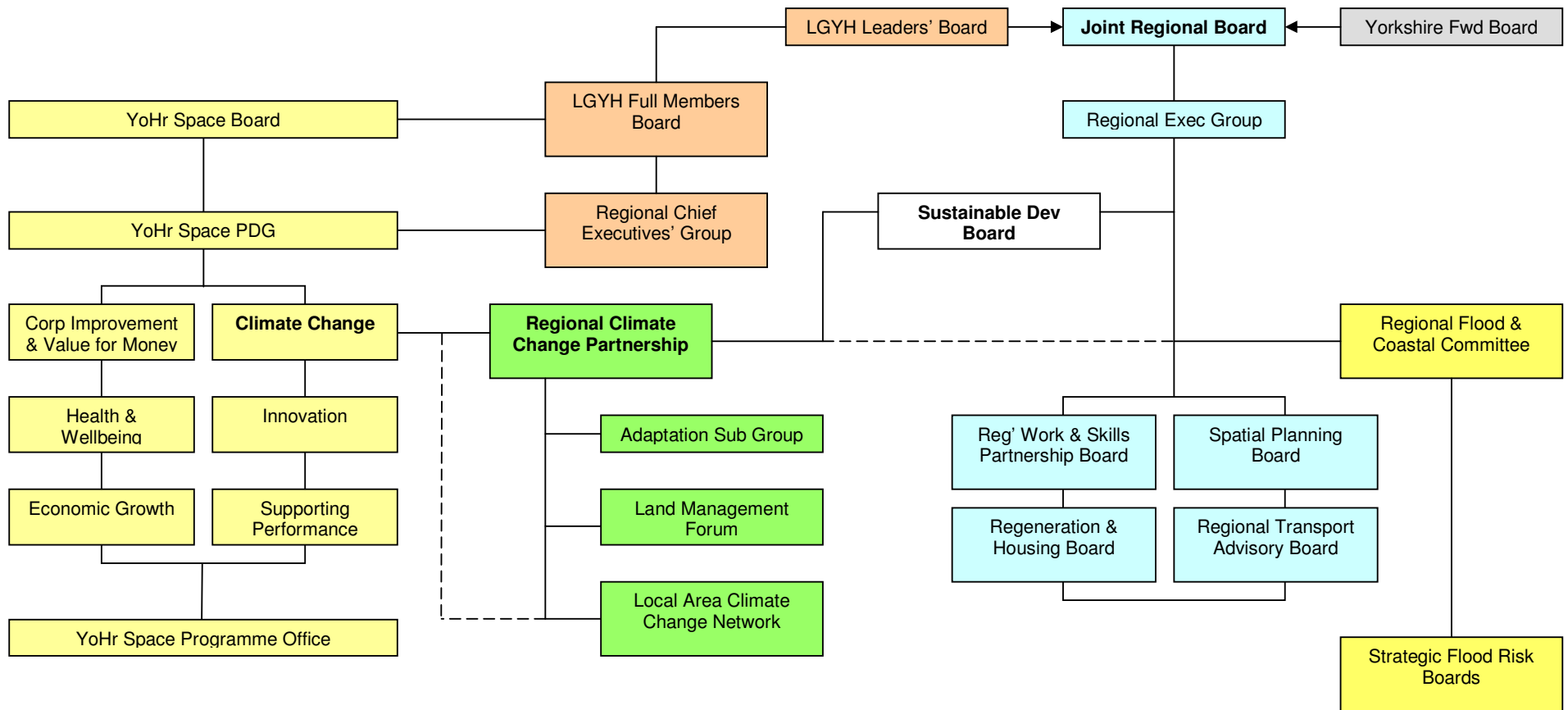
## **6. Risk Management Strategy**

A plan for identifying, prioritising and controlling the risks to the success of the programme in terms of meeting its time, cost, quality, benefits and scope targets is set out in annex B.

## **7. Quality Management Strategy**

[Specify the procedure for ensuring that projects under this programme are fit for purpose and respond to the programme's scope and objectives].





Leeds City Region

Sheffield City Region

Hull & Humber Ports

York & North Yorkshire

Local Strategic Partnerships

## Risk log

Risk	Owner	Impact H/M/L	Probability H/M/L	Mitigation	Deadline	Residual risk
Duplication of effort across the regions	JC	M	M	Sharing of draft work programmes to identify opportunities to collaborate nationally or inter-regionally.	May 2010	Inability to reconcile projects into shared milestones and outcomes between regions.
Current officer capacity not enough to ensure delivery within already tight timescales	CCB	H	M	Ensure capacity is built in either regionally, sub-regionally or locally.	Jun / Jul 2010	Delay in securing additional capacity leads to slippage in timescales
Inability to spend funding within agreed timescales whilst ensuring best possible value for money	CCB	M	M	As above (capacity) to ensure coordination is built in from the start to avoid duplication and to identify economies of scale.	Jun / Jul 2010	Delay in securing additional capacity leads to poor value for money or underspend.

JC – Jon Clubb

CCB – YoHr Space Climate Change Board