



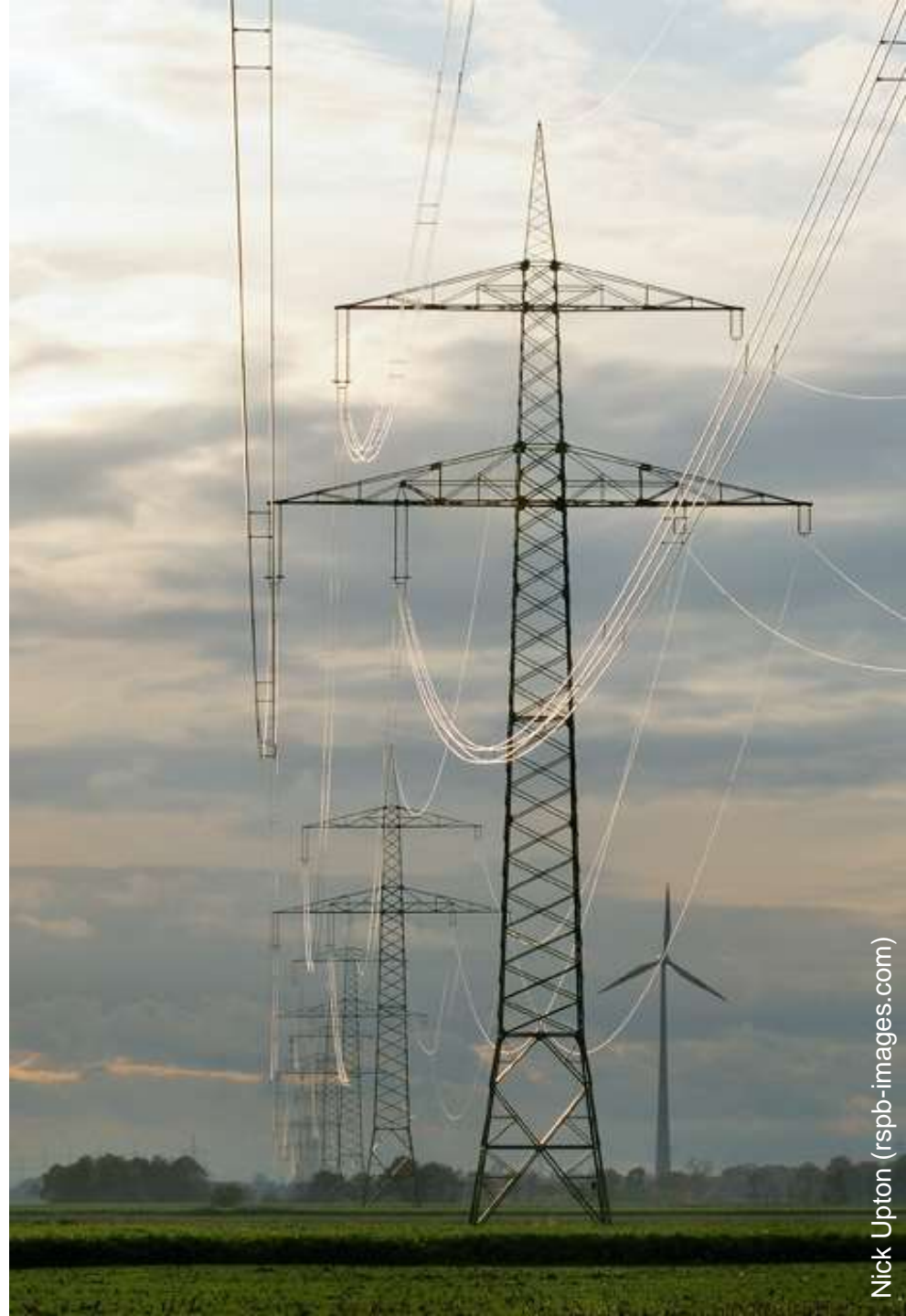
giving
nature
a home

Developing renewable energy in harmony with nature

Renewable Energy
& Local Opportunities,
York, 4th July 2013

Introduction

- The RSPB's response to climate change and the need to reduce emissions
- The risks posed to wildlife by renewable energy deployment
- Ways these risks can be either avoided or mitigated for
- Plus the potential opportunities for delivering a net biodiversity gain



Climate change: the greatest long term threat to wildlife



Spotted Flycatcher



Kittiwake

What are we doing about it?

Andy Hay (rspb-images.com)



Installing solar panels at RSPB Sandwell Valley, Birmingham





Blanket bog



Curlew



Noctule

Risks to wildlife from renewable energy

- Direct habitat loss and damage
- Disturbance and displacement
- Collision mortality
- Cumulative impacts of multiple developments

Blanket bog: Eleanor Bentall ([rspb-images.com](https://www.rspb-images.com))
Curlew: Chris Gomersall ([rspb-images.com](https://www.rspb-images.com))
Noctule: Steve Knell ([rspb-images.com](https://www.rspb-images.com))

Renewable energy in harmony with nature

- Strategic planning
- Project level considerations
- Potential to deliver positive biodiversity gain

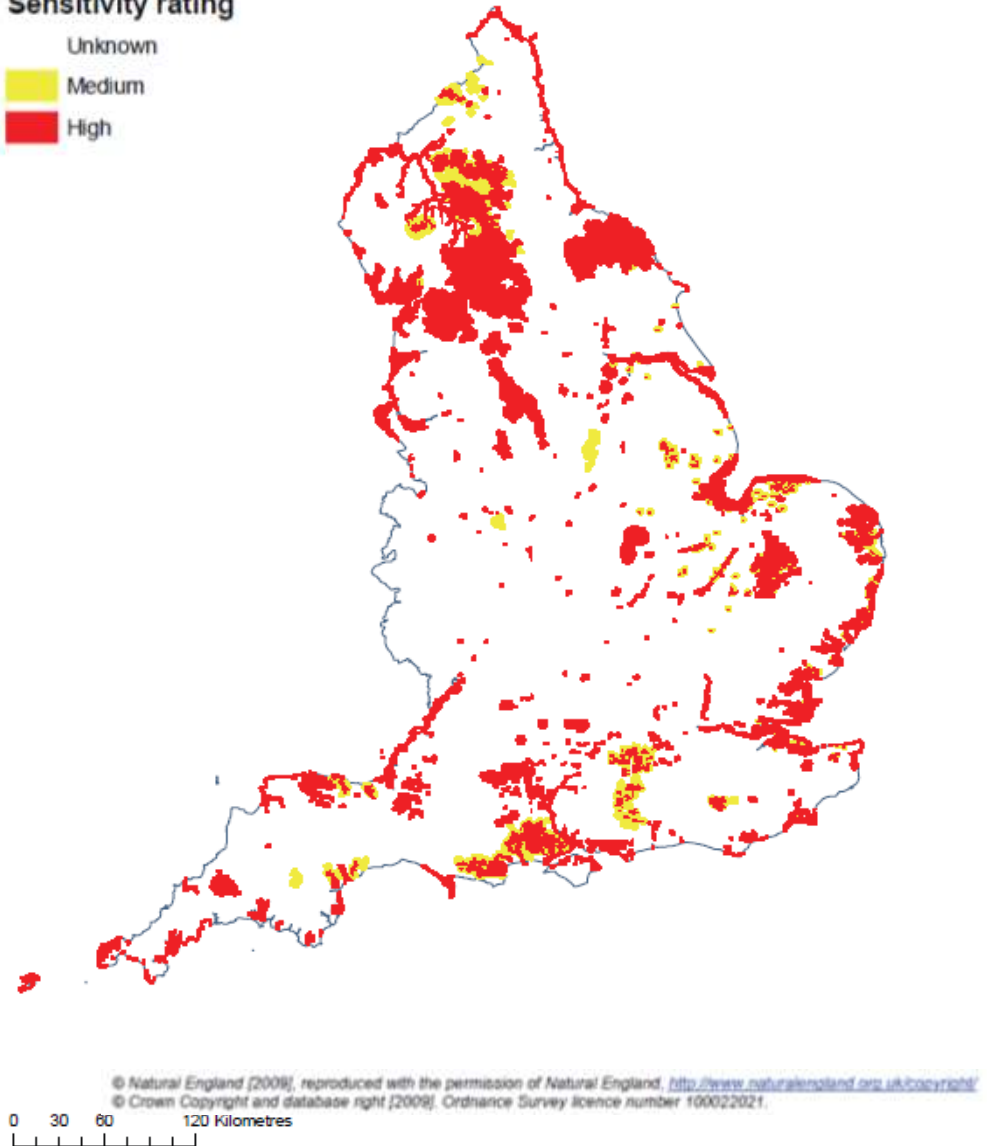


Strategic planning for renewables

Key elements from a nature conservation point of view:

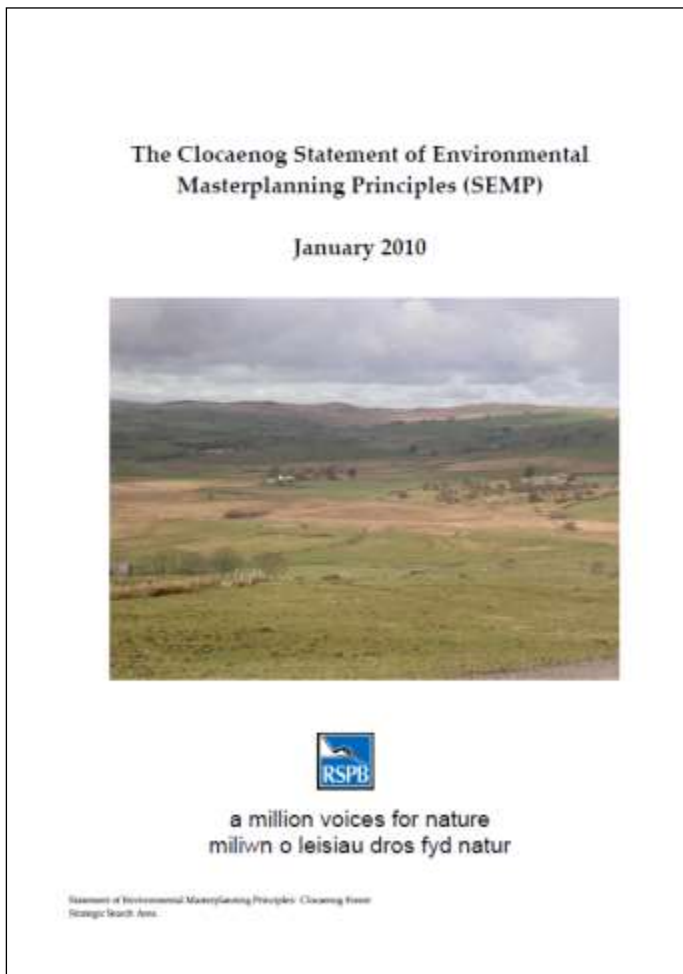
- Robust evidence base
- Spatially-explicit approach
- Sensitivity mapping
- Community and stakeholder engagement

Sensitivity rating

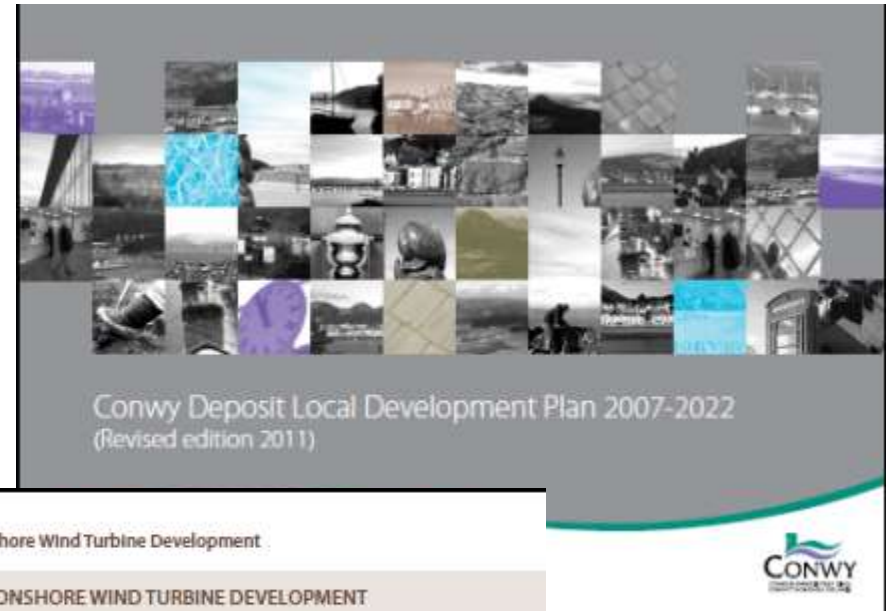


From RSPB Research report no.35
“Mapped and written guidance in relation
to birds and onshore wind energy
development in England”

Strategic planning for renewables: delivering positives



“Habitat creation or restoration conforms to the principles contained in the Clocaenog Statement of Environmental Planning Principles (SEMP)...”



Project Level Considerations

- Good siting and design
- Mitigation of predicted impacts
- Early and close collaboration
- Post construction monitoring

Andy Hay (rspb-images.com)



Take-home messages

- Climate change is here, now. We need renewable energy projects to happen.
- Strategic planning saves time (and tempers!)
- Project level planning – plan, do, review
- Create harmony: deliver renewables and look for opportunities to benefit wildlife directly





giving
nature
a home

The RSPB is the country's largest nature conservation charity, inspiring everyone to give nature a home.