

Local Health & Wellbeing in a changing climate

Building Preparedness for people, services and communities

5 March 2013



ClimateNE



Developing Options for Adaptation: Business Areas Climate Assessment Tool

A photograph of a stone bridge over a river. Two people are walking across the bridge. The scene is set in a rural area with trees and hills in the background. The text "Local Health & Wellbeing in a changing climate" is overlaid on the image in orange.

Local Health & Wellbeing in a changing climate

ClimateNE

climate uk

your climate
CLIMATE CHANGE PARTNERSHIP
FOR YORKSHIRE & HUMBER

interactive session

- A short introduction – 10 minutes
- Table discussions – 35 minutes
- ‘Dotmocracy’ – 10 minutes
- Summing up – 5 minutes

why do we need to adapt?

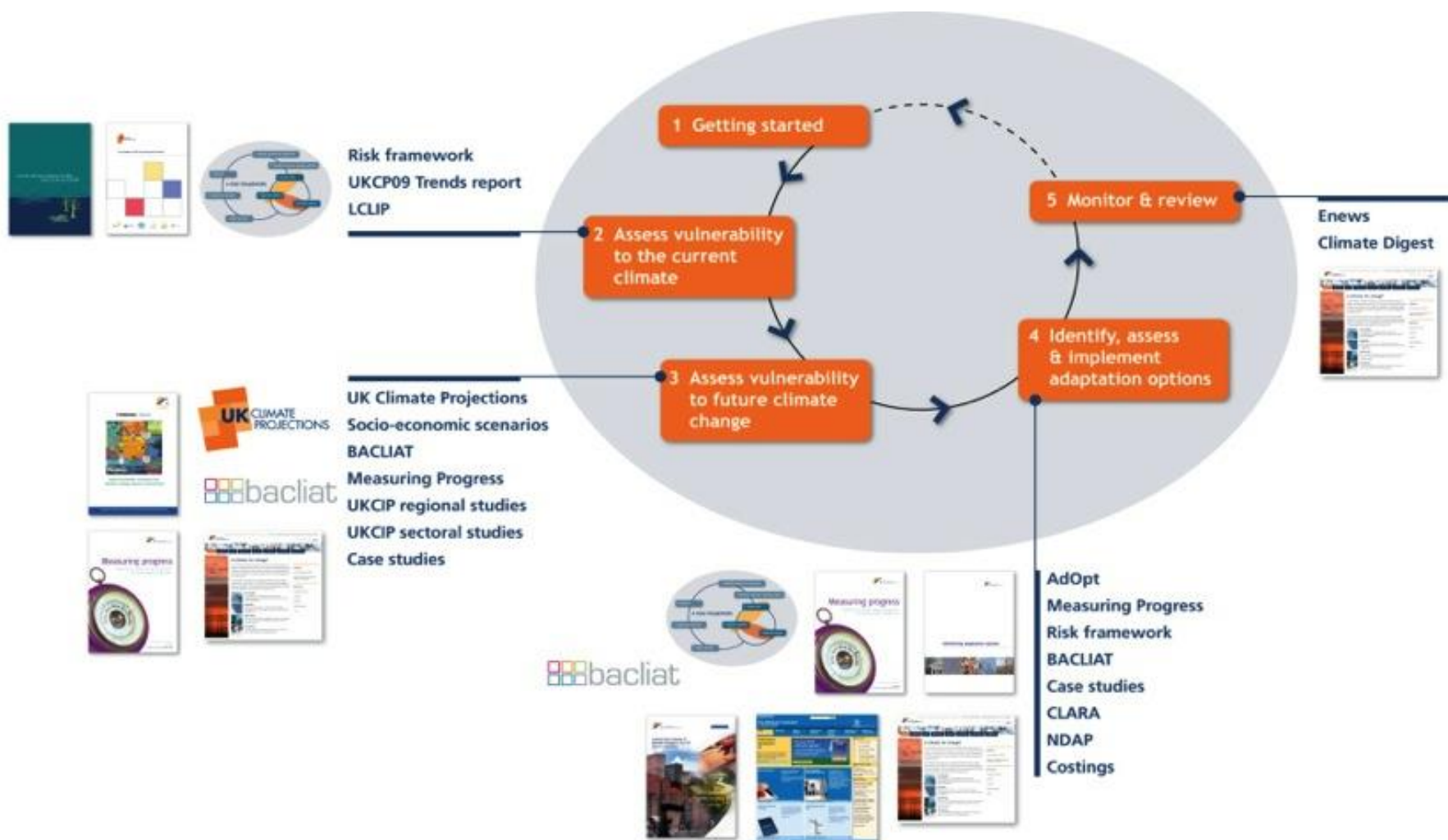
- No one can know exactly what will happen in the future
- A solely low carbon economy will still be vulnerable to climate/weather risks
- Identify and manage the possible risks and opportunities is better than reacting to events
- Forward thinking allows you to plan for changes not react to them
- Adapting may identify new opportunities



tools and support

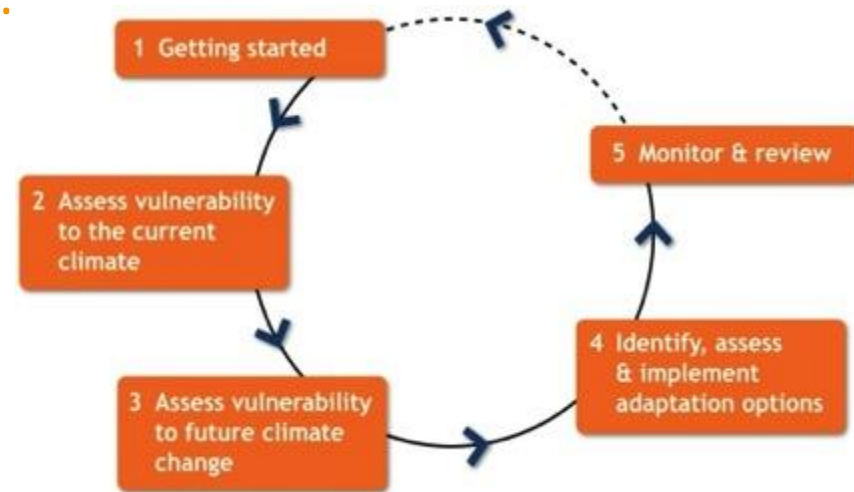
- Climate UK – the national network of Climate Change Partnerships
- The Environment Agency - Climate Ready Support Service
- UKCIP – the UK Climate Impacts Programme

resources available



The UKCIP Adaptation Wizard

- An on-line tool to help organisations adapt to climate change
- Provides an iterative 5-step process to:
 - Get started
 - Assess sensitivity to current weather and future climate changes
 - identify key climate risks
 - identify, appraise and implement options to address key risks
 - monitor and review
- The Wizard draws on a number of other tools and resources – including the **BACLIAT**



BACLIAT

- Business Areas Climate Assessment Tool
- The **BACLIAT** is a tool that is aimed at business managers as well as those in business-facing organisations and is based on practical experience. The **BACLIAT** process can also be tailored to suit the needs of non- business organisations.

Why BACLIAT?

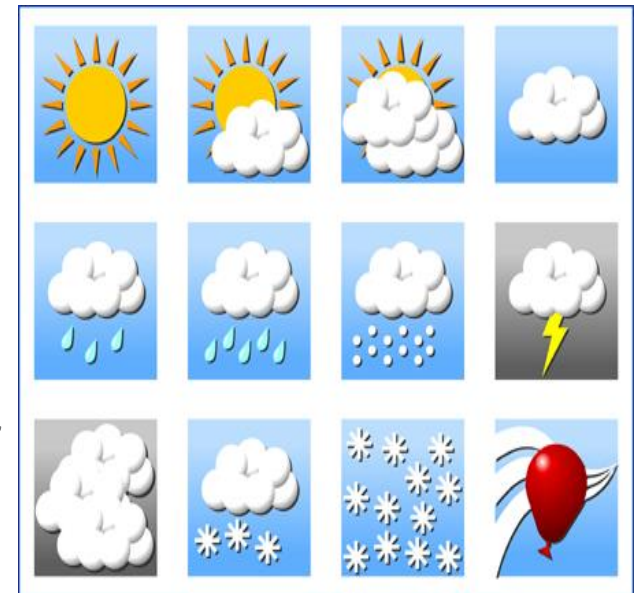
- Designed as workshop resources
- Tried and tested
- Simple, quick, effective, producing real outputs
- Invites consideration of current vulnerability, future impacts and potential responses using six generic business areas:
 - **markets**
 - **process,**
 - **logistics,**
 - **people,**
 - **premises**
 - **finance**

adapted for health

- South West Climate Change Partnership, piloted BACLIAT for use with healthcare professionals in 2011
- Developed / refined the definitions of the 6 categories
- Developed 2 test cases with outputs

for BACLIAT... less is more

- You can complete BACLIAT with very limited climate information
- Detail is only really needed if you are addressing something specific – with an identified threshold
- In the UK we can generally expect the following from climate change:
 - *hotter and drier summers*
 - *milder and wetter winters*
 - *rising sea levels*
 - *more very hot days and heat-waves*
 - *more intense downpours of rain*
 - *a possible increase in storms in the winter*



<http://www.webdesign-guru.co.uk/icon/free-icons/>

six business areas

1 Markets

- Population need and changing demand for health services

2 Logistics

- Vulnerability of supply chain, utilities and transport infrastructure.

3 Premises

- Impacts on building design, construction, maintenance and facilities management.

4 Process

- Impacts on planning and service delivery.

5 People

- Implications for workforce and changing lifestyles.

6 Finance

- Implications for investment, resources and organisational reputation

explaining terminology

Weather

- What it is doing outside right now
- It is mainly extreme weather events, and their impacts, that present risks to society

Climate

- The average weather in a locality over a thirty year period

explaining terminology

mitigation

reducing greenhouse gas emissions to a safe and stable level

adaptation

respond to the predicted impacts of unavoidable climate change

Q. How will your organisation be affected by warmer wetter winters & hotter, dryer summers?

35 minutes

- Consider each of the 6 BACLIAT themes

| | |
|------------------|--|
| Markets | - population need & changing demand for health services |
| Process | - impacts on planning and service delivery |
| Logistics | - vulnerability to supply chain, utilities and transport |
| People | - workforce, customers and changing lifestyles |
| Premises | - building design, construction, maintenance, facilities |
| Finance | - implications for investments, insurance and reputation |

- For each, what are the challenges and benefits?
- Put your thoughts on post-it notes

‘dotmocracy’

10 minutes

- Summary of key impacts
- Use your 5 voting dots
- Prioritise issues most important to your organisation and business area



5 minutes

- Review of results

dotmocracy – the results

summary, reflections and close

Will Day - Chair

Jeremy Walker – Chair, Your Climate