

## Green Roof at The Cube, 101 Shoreham Street, Sheffield

- **Local authority area:** Sheffield City Council
- **Stakeholders:** Derwent Living and Hawk Estates (developer), Carey Jones Architects, Sheffield City Council (Development Management, Environmental Planning, Land Drainage), Environment Agency

### Summary

Development of 53 flats and 10 office units, incorporating a green roof.

### Key learning points

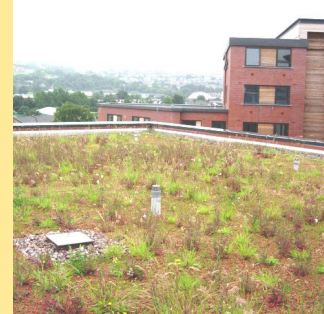
- Be persuasive with the developer, and do not be put off by apparent difficulties.
- Emphasise the need for biodiversity to be addressed in city centre developments.
- If possible, set specifications for Green Roofs, based on local experience of what works.

### Background

- The Green Roof was provided to the Council's own standard of a mixture of 15-25% organic matter and 75-85 % crushed rubble to a depth of 80mm minimum, with a wild seed mixture.
- This standard was established by the Council's Environmental Planning team.
- The Green Roof was secured by a planning condition and implemented by the architect and developer who were keen to oblige.

### Result - Key outcomes and impact

- The green roof also provides a method of reducing surface water run-off, thereby reducing flood risk.
- This scheme is sometimes highlighted to other developers/architects as a good example to follow.



## Key contact

Name	Peter Latham
Post title	Principal Planning Officer, Development Management, Development Services
Email	<a href="mailto:peter.latham@sheffield.gov.uk">peter.latham@sheffield.gov.uk</a>
Telephone number	0114 273 4182
Address	Development Services Sheffield City Council Howden House 1 Union Street Sheffield S1 2SH

## References / Links

Sheffield City Council's guidance on preparing a Sustainability Statement  
<http://www.sheffield.gov.uk/planning-and-city-development/applications/apply/lpar/sustainability-statement>

Sheffield Green Roof Centre  
<http://www.thegreenroofcentre.co.uk/>

The application can be viewed at  
[http://planning.sheffield.gov.uk/publicaccess/tdc/DcApplication/application\\_searchform.aspx](http://planning.sheffield.gov.uk/publicaccess/tdc/DcApplication/application_searchform.aspx).

Climate Change and Design Supplementary Planning Guidance and Practice Guide (adopted 2011)  
<https://www.sheffield.gov.uk/planning-and-city-development/planning-documents/sdf/supplementary-planning-documents/climate-change-and-design-spd.html>